



Soave

# First floor

[11] one and two bedroom apartments

- One bedroom
- Two bedrooms



**Apartment B101**  
65.61 sqm plus 13.92 balcony

- 1. Kitchen/Living Room 3.6 x 7.3m
- 2. Bathroom 2.0 x 2.2m
- 3. Master Bedroom 2.8 x 5.0m
- 4. Bedroom 2 2.4 x 3.7m
- 5. Utility 0.8 x 2.2m
- 6. Balcony 1.6 x 8.7m

**Apartment B102**  
65.61 sqm plus 14.88 balcony

- 1. Kitchen/Living Room 3.6 x 7.3m
- 2. Bathroom 2.0 x 2.2m
- 3. Master Bedroom 2.8 x 5.0m
- 4. Bedroom 2 2.4 x 3.7m
- 5. Utility 0.8 x 2.2m
- 6. Balcony 1.6 x 9.3m

**Apartment B103**  
51.42 sqm plus 12.00 balcony

- 1. Kitchen/Living Room 3.8 x 7.3m
- 2. Bathroom 2.0 x 2.2m
- 3. Bedroom 3.4 x 5.0m
- 4. Utility 0.8 x 2.2m
- 5. Balcony 1.6 x 7.5m

**Apartment B104**  
51.42 sqm plus 9.44 balcony

- 1. Kitchen/Living Room 3.8 x 7.3m
- 2. Bathroom 2.0 x 2.2m
- 3. Bedroom 3.4 x 5.0m
- 4. Utility 0.8 x 2.2m
- 5. Balcony 1.6 x 5.9m

**Apartment B105**  
66.71 sqm plus 11.16 balconies

- 1. Kitchen/Living Room 3.7 x 7.6m
- 2. Bathroom 2.0 x 2.2m
- 3. Master Bedroom 2.9 x 5.0m
- 4. Bedroom 2 2.4 x 3.7m
- 5. Utility 0.8 x 2.2m
- 6. Balconies (1.6 x 3.6) + (1.5 x 3.6m)

**Apartment B106**  
54.74 sqm plus 5.40 balcony

- 1. Kitchen/Living Room 3.8 x 7.6m
- 2. Bathroom 2.0 x 2.2m
- 3. Bedroom 3.4 x 5.2m
- 4. Utility 0.9 x 2.2m
- 5. Balcony 1.5 x 3.6m

**Apartment B107**  
51.42 sqm plus 9.44 balcony

- 1. Kitchen/Living Room 3.8 x 7.3m
- 2. Bathroom 2.0 x 2.2m
- 3. Bedroom 3.4 x 5.0m
- 4. Utility 0.8 x 2.2m
- 5. Balcony 1.6 x 5.9m

**Apartment B108**  
54.74 sqm plus 5.40 balcony

- 1. Kitchen/Living Room 3.8 x 7.6m
- 2. Bathroom 2.0 x 2.2m
- 3. Bedroom 3.4 x 5.3m
- 4. Utility 0.9 x 2.2m
- 5. Balcony 1.5 x 3.6m

**Apartment B109**  
53.69 sqm plus 5.40 balcony

- 1. Kitchen/Living Room 3.8 x 7.6m
- 2. Bathroom 2.0 x 2.2m
- 3. Bedroom 3.4 x 5.0m
- 4. Utility 0.8 x 2.2m
- 5. Balcony 1.5 x 3.6m

**Apartment B110**  
51.72 sqm plus 5.40 balcony

- 1. Kitchen/Living Room 4.1 x 6.0m
- 2. Bathroom 2.0 x 2.2m
- 3. Bedroom 4.1 x 4.2m
- 4. Utility 0.8 x 2.2m
- 5. Balcony 1.5 x 3.6m

**Apartment B111**  
50.39 sqm plus 4.90 balcony

- 1. Kitchen/Living Room 4.0 x 5.2m
- 2. Bathroom 2.0 x 2.2m
- 3. Bedroom 3.4 x 4.0m
- 4. Utility 1.3 x 2.2m
- 5. Balcony 1.4 x 3.6m

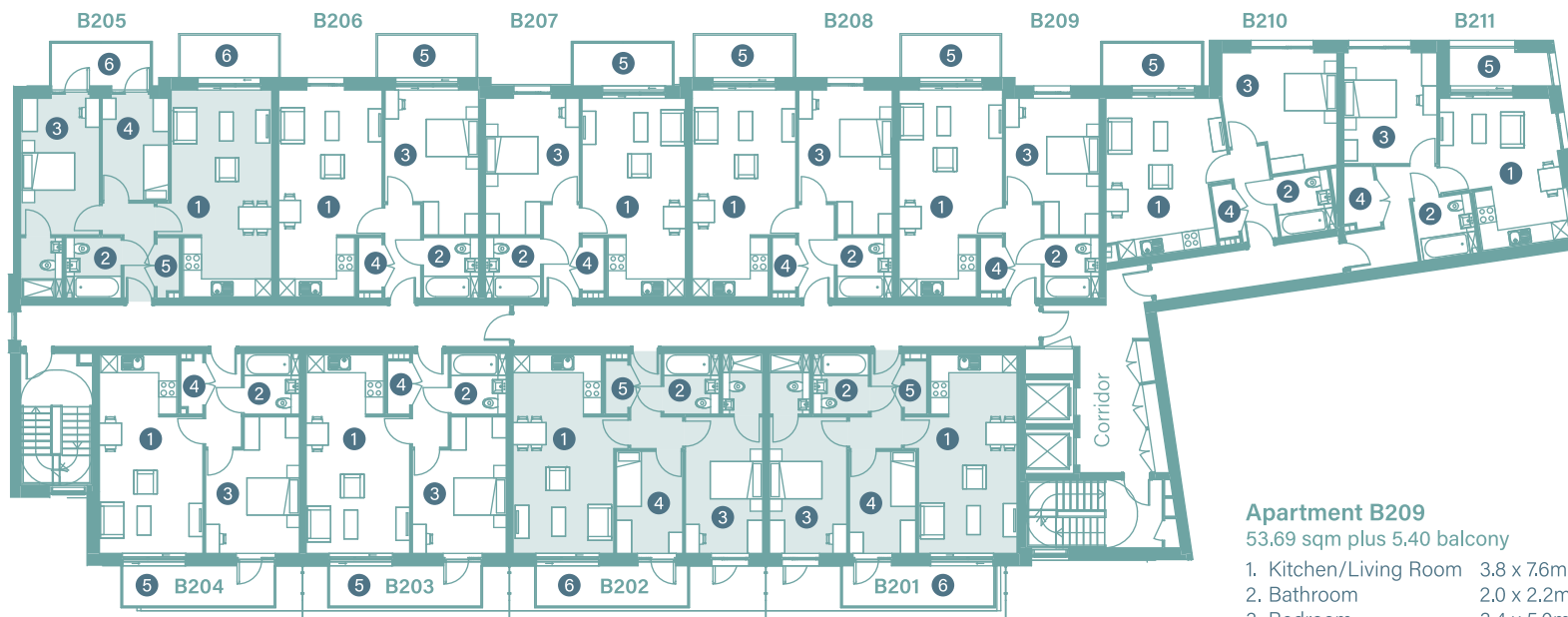


Soave

# Second floor

[11] one and two bedroom apartments

- One bedroom
- Two bedrooms



## Apartment B201

65.61 sqm plus 8,10 balcony

- 1. Kitchen/Living Room 3.6 x 7.3m
- 2. Bathroom 2.0 x 2.2m
- 3. Master Bedroom 2.8 x 5.0m
- 4. Bedroom 2 2.4 x 3.7m
- 5. Utility 0.8 x 2.2m
- 6. Balcony 1.5 x 5.5m

## Apartment B202

65.61 sqm plus 8,10 balcony

- 1. Kitchen/Living Room 3.6 x 7.3m
- 2. Bathroom 2.0 x 2.2m
- 3. Master Bedroom 2.8 x 5.0m
- 4. Bedroom 2 2.4 x 3.7m
- 5. Utility 0.8 x 2.2m
- 6. Balcony 1.5 x 5.5m

## Apartment B203

51.42 sqm plus 8,10 balcony

- 1. Kitchen/Living Room 3.8 x 7.3m
- 2. Bathroom 2.0 x 2.2m
- 3. Bedroom 3.4 x 5.0m
- 4. Utility 0.8 x 2.2m
- 5. Balcony 1.5 x 5.5m

## Apartment B204

51.42 sqm plus 8,10 balcony

- 1. Kitchen/Living Room 3.8 x 7.3m
- 2. Bathroom 2.0 x 2.2m
- 3. Bedroom 3.4 x 5.0m
- 4. Utility 0.8 x 2.2m
- 5. Balcony 1.5 x 5.5m

## Apartment B205

66.71 sqm plus 11,16 balconies

- 1. Kitchen/Living Room 3.7 x 7.6m
- 2. Bathroom 2.0 x 2.2m
- 3. Master Bedroom 2.9 x 5.0m
- 4. Bedroom 2 2.4 x 3.7m
- 5. Utility 0.8 x 2.2m
- 6. Balconies (1.6 x 3.6) + (1.5 x 3.6m)

## Apartment B206

54.74 sqm plus 5,40 balcony

- 1. Kitchen/Living Room 3.8 x 7.6m
- 2. Bathroom 2.0 x 2.2m
- 3. Bedroom 3.4 x 5.2m
- 4. Utility 0.9 x 2.2m
- 5. Balcony 1.5 x 3.6m

## Apartment B207

51.42 sqm plus 9,44 balcony

- 1. Kitchen/Living Room 3.8 x 7.3m
- 2. Bathroom 2.0 x 2.2m
- 3. Master Bedroom 3.4 x 5.0m
- 4. Utility 0.8 x 2.2m
- 5. Balcony 1.6 x 5.9m

## Apartment B208

54.74 sqm plus 5,40 balcony

- 1. Kitchen/Living Room 3.8 x 7.6m
- 2. Bathroom 2.0 x 2.2m
- 3. Bedroom 3.4 x 5.3m
- 4. Utility 0.9 x 2.2m
- 5. Balcony 1.5 x 3.6m

## Apartment B209

53.69 sqm plus 5,40 balcony

- 1. Kitchen/Living Room 3.8 x 7.6m
- 2. Bathroom 2.0 x 2.2m
- 3. Bedroom 3.4 x 5.0m
- 4. Utility 0.8 x 2.2m
- 5. Balcony 1.5 x 3.6m

## Apartment B210

51.72 sqm plus 5,40 balcony

- 1. Kitchen/Living Room 4.1 x 6.0m
- 2. Bathroom 2.0 x 2.2m
- 3. Bedroom 4.1 x 4.2m
- 4. Utility 0.8 x 2.2m
- 5. Balcony 1.5 x 3.6m

## Apartment B211

50.39 sqm plus 4,90 balcony

- 1. Kitchen/Living Room 4.0 x 5.2m
- 2. Bathroom 2.0 x 2.2m
- 3. Bedroom 3.4 x 4.0m
- 4. Utility 1.3 x 2.2m
- 5. Balcony 1.4 x 3.6m



Soave

# Third floor

[11] one and two bedroom apartments

- One bedroom
- Two bedrooms



**Apartment B301**  
65.61 sqm plus 8.10 balcony

- 1. Kitchen/Living Room 3.6 x 7.3m
- 2. Bathroom 2.0 x 2.2m
- 3. Master Bedroom 2.8 x 5.0m
- 4. Bedroom 2 2.4 x 3.7m
- 5. Utility 0.8 x 2.2m
- 6. Balcony 1.5 x 5.5m

**Apartment B302**  
65.61 sqm plus 8.10 balcony

- 1. Kitchen/Living Room 3.6 x 7.3m
- 2. Bathroom 2.0 x 2.2m
- 3. Master Bedroom 2.8 x 5.0m
- 4. Bedroom 2 2.4 x 3.7m
- 5. Utility 0.8 x 2.2m
- 6. Balcony 1.5 x 5.5m

**Apartment B303**  
51.42 sqm plus 8.10 balcony

- 1. Kitchen/Living Room 3.8 x 7.3m
- 2. Bathroom 2.0 x 2.2m
- 3. Bedroom 3.4 x 5.0m
- 4. Utility 0.8 x 2.2m
- 5. Balcony 1.5 x 5.5m

**Apartment B304**  
51.42 sqm plus 8.10 balcony

- 1. Kitchen/Living Room 3.8 x 7.3m
- 2. Bathroom 2.0 x 2.2m
- 3. Bedroom 3.4 x 5.0m
- 4. Utility 0.8 x 2.2m
- 5. Balcony 1.5 x 5.5m

**Apartment B305**  
66.71 sqm plus 11.16 balconies

- 1. Kitchen/Living Room 3.7 x 7.6m
- 2. Bathroom 2.0 x 2.2m
- 3. Master Bedroom 2.9 x 5.0m
- 4. Bedroom 2 2.4 x 3.7m
- 5. Utility 0.8 x 2.2m
- 6. Balconies (1.6 x 3.6) + (1.5 x 3.6m)

**Apartment B306**  
54.74 sqm plus 5.40 balcony

- 1. Kitchen/Living Room 3.8 x 7.6m
- 2. Bathroom 2.0 x 2.2m
- 3. Bedroom 3.4 x 5.2m
- 4. Utility 0.9 x 2.2m
- 5. Balcony 1.5 x 3.6m

**Apartment B307**  
51.42 sqm plus 9.44 balcony

- 1. Kitchen/Living Room 3.8 x 7.3m
- 2. Bathroom 2.0 x 2.2m
- 3. Bedroom 3.4 x 5.0m
- 4. Utility 0.8 x 2.2m
- 5. Balcony 1.6 x 5.9m

**Apartment B308**  
54.74 sqm plus 5.40 balcony

- 1. Kitchen/Living Room 3.8 x 7.6m
- 2. Bathroom 2.0 x 2.2m
- 3. Bedroom 3.4 x 5.3m
- 4. Utility 0.9 x 2.2m
- 5. Balcony 1.5 x 3.6m

**Apartment B309**  
53.69 sqm plus 5.40 balcony

- 1. Kitchen/Living Room 3.8 x 7.6m
- 2. Bathroom 2.0 x 2.2m
- 3. Bedroom 3.4 x 5.0m
- 4. Utility 0.8 x 2.2m
- 5. Balcony 1.5 x 3.6m

**Apartment B310**  
51.72 sqm plus 5.40 balcony

- 1. Kitchen/Living Room 4.1 x 6.0m
- 2. Bathroom 2.0 x 2.2m
- 3. Bedroom 4.1 x 4.2m
- 4. Utility 0.8 x 2.2m
- 5. Balcony 1.5 x 3.6m

**Apartment B311**  
50.39 sqm plus 4.90 balcony

- 1. Kitchen/Living Room 4.0 x 5.2m
- 2. Bathroom 2.0 x 2.2m
- 3. Bedroom 3.4 x 4.0m
- 4. Utility 1.3 x 2.2m
- 5. Balcony 1.4 x 3.6m

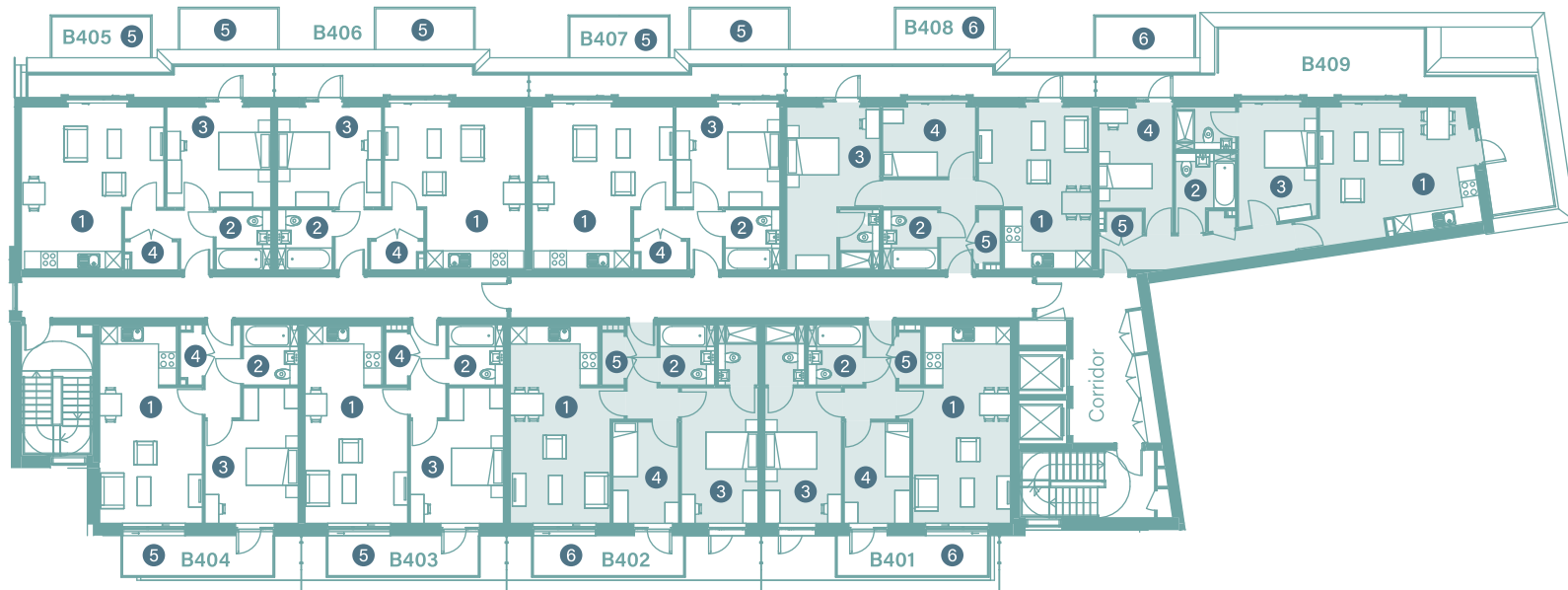


Soave

# Fourth floor

[9] one and two bedroom apartments

- One bedroom
- Two bedrooms



## Apartment B401

65,61 sqm plus 8,25 balcony

- 1. Kitchen/Living Room 3,6 x 7,3m
- 2. Bathroom 2,0 x 2,2m
- 3. Master Bedroom 2,8 x 5,0m
- 4. Bedroom 2 2,4 x 3,7m
- 5. Utility 0,8 x 2,2m
- 6. Balcony 1,5 x 5,5m

## Apartment B402

65,61 sqm plus 8,25 balcony

- 1. Kitchen/Living Room 3,6 x 7,3m
- 2. Bathroom 2,0 x 2,2m
- 3. Master Bedroom 2,8 x 5,0m
- 4. Bedroom 2 2,4 x 3,7m
- 5. Utility 0,8 x 2,2m
- 6. Balcony 1,5 x 5,5m

## Apartment B403

51,42 sqm plus 8,25 balcony

- 1. Kitchen/Living Room 3,8 x 7,3m
- 2. Bathroom 2,0 x 2,2m
- 3. Bedroom 3,4 x 5,0m
- 4. Utility 0,8 x 2,2m
- 5. Balcony 1,5 x 5,5m

## Apartment B404

51,42 sqm plus 8,25 balcony

- 1. Kitchen/Living Room 3,8 x 7,3m
- 2. Bathroom 2,0 x 2,2m
- 3. Bedroom 3,4 x 5,0m
- 4. Utility 0,8 x 2,2m
- 5. Balcony 1,5 x 5,5m

## Apartment B405

52,94 sqm plus 10,23 balcony

- 1. Kitchen/Living Room 5,2 x 6,0m
- 2. Bathroom 2,0 x 2,2m
- 3. Bedroom 3,7 x 3,8m
- 4. Utility 1,1 x 2,0m
- 5. Balcony 1,1 x 9,3m

## Apartment B406

52,94 sqm plus 10,23 balcony

- 1. Kitchen/Living Room 5,2 x 6,0m
- 2. Bathroom 2,0 x 2,2m
- 3. Bedroom 3,7 x 3,8m
- 4. Utility 1,1 x 2,0m
- 5. Balcony 1,1 x 9,3m

## Apartment B407

52,94 sqm plus 9,40 balcony

- 1. Kitchen/Living Room 5,2 x 6,0m
- 2. Bathroom 2,0 x 2,2m
- 3. Bedroom 3,7 x 3,8m
- 4. Utility 1,1 x 2,0m
- 5. Balcony 1,0 x 9,4m

## Apartment B408

65,23 sqm plus 12,43 balcony

- 1. Kitchen/Living Room 4,2 x 6,0m
- 2. Bathroom 2,0 x 2,2m
- 3. Master Bedroom 3,4 x 6,0m
- 4. Bedroom 2 2,6 x 3,4m
- 5. Utility 0,8 x 2,2m
- 6. Balcony 1,1 x 11,3m

## Apartment B409

70,53 sqm plus 37,75 balcony

- 1. Kitchen/Living Room 4,3 x 5,3m
- 2. Bathroom 2,2 x 2,9m
- 3. Master Bedroom 2,7 x 4,6m
- 4. Bedroom 2 2,9 x 4,4m
- 5. Utility 0,8 x 1,6m
- 6. Balcony 4,9 x 16,1m

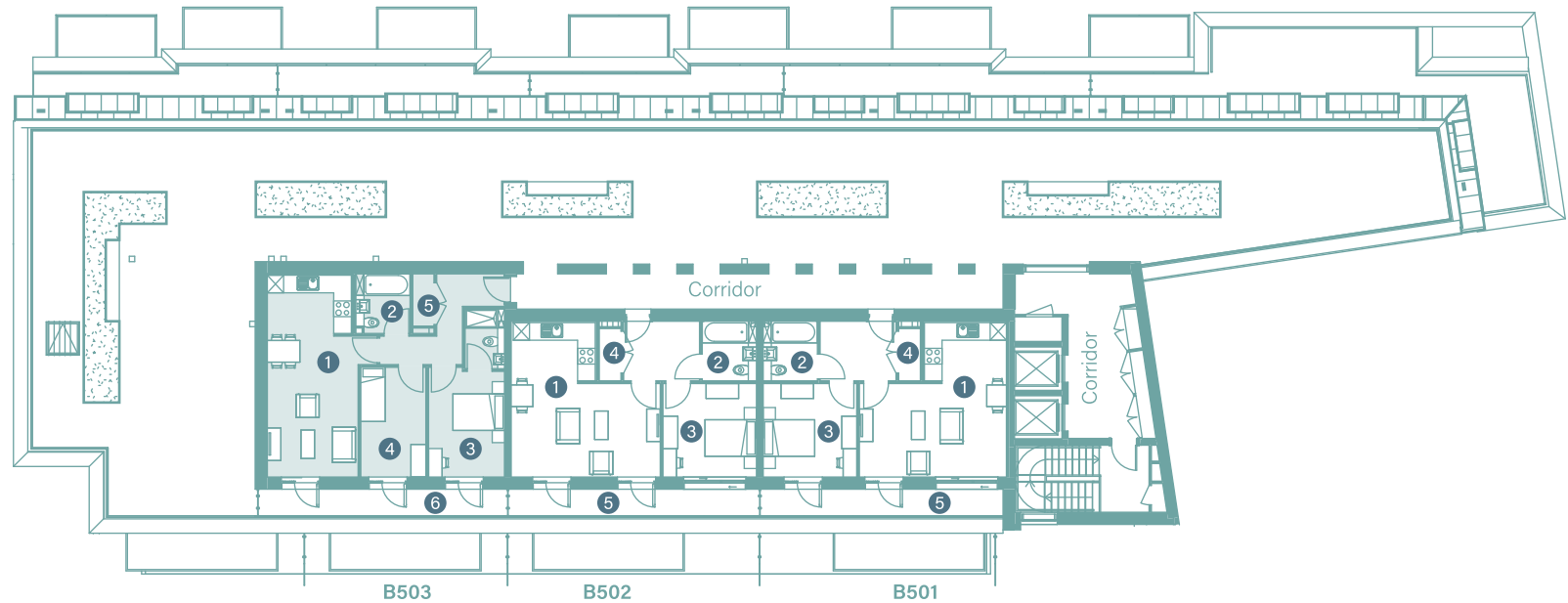


Soave

# Fifth floor

[3] one and two bedroom apartments

- One bedroom
- Two bedrooms



## Apartment B501

52.94 sqm plus 9.00 balcony

- 1. Kitchen/Living Room 5.4 x 5.8m
- 2. Bathroom 2.0 x 2.2m
- 3. Bedroom 3.5 x 3.5m
- 4. Utility 0.8 x 2.2m
- 5. Balcony 1.0 x 9.0m

## Apartment B502

52.94 sqm plus 9.30 balcony

- 1. Kitchen/Living Room 5.4 x 5.8m
- 2. Bathroom 2.0 x 2.2m
- 3. Bedroom 3.5 x 3.5m
- 4. Utility 0.8 x 2.2m
- 5. Balcony 1.0 x 9.3m

## Apartment B503

65.62 sqm plus 9.20 balcony

- 1. Kitchen/Living Room 3.4 x 7.5m
- 2. Bathroom 2.0 x 2.2m
- 3. Master Bedroom 2.8 x 4.1m
- 4. Bedroom 2 2.4 x 4.1m
- 5. Utility 0.8x2.2m
- 6. Balcony 1.0 x 9.2m