



**MERCHANTS  
SQUARE**



Fred Clarke, the first of the family elected Constable of St Helier, meets the Queen and Philip in 1953.

## History of Le Masurier.

C. Le Masurier Limited was founded in 1835 by Clement Le Masurier, who was later joined by his son and then by Fred Clarke, whose family still owns the business today.

Originally they traded as a wine and spirits merchant, later opening a chain of Wine Lodges in prominent positions in St Helier, including King Street and Queen Street, as well as Colomberie, the Parade and Broad Street. Le Masurier also owned property on Bath Street and from the late 1800s merchants, doctors, music teachers, piano tuners, chemists, ironmongers and perfumers could be found on the upper part of the street. Residents and traders on lower Bath Street were farmers, labourers, dressmakers, rope makers, butchers, brush makers, publicans and laundresses.

In recent years, Le Masurier have diversified the business. Today, they are a well renowned and respected property investor and developer here in Jersey, the UK and throughout Europe. Their vision is to put Bath Street back on the map.



Le Masuriers retail outlets were known as Wine Lodges. This was the flagship enterprise in King Street.





WHOLESALE

**C. Le Masurier Ltd.**  
PURVEYORS OF  
*Fine Wines.*

JULY 1954

THE WINE MERCHANTS

**C. LE MASURIER**  
LIMITED

Head Office, Cellars, Bottling Depot:  
BARROW BATH STREET  
and  
THE STORES, DUMARESQ STREET,  
JERSEY,  
Ile de La Manche

RETAIL  
WINE and TOBACCO LIST

Telephone Numbers:  
CENTRAL 147, 274, 319, 1234 & 300

RETAIL DEPOT, 25 BATH STREET      Managers: A. H. GIBBS  
STORES, DUMARESQ STREET      Managers: G. H. GIBBS

1954 100

Soft Drinks

**C. LE MASURIER**  
LIMITED

Head Office, Cellars, Bottling Depot:  
BARROW BATH STREET  
JERSEY,  
Ile de La Manche

WHOLESALE

SOFT DRINKS,  
CIGARETTES and TOBACCO LIST  
INCLUDING RETAIL CIGARETTE PRICES

All prices are subject to change being notified, and have  
prior reference to the date from which in force.

Telephone: CENTRAL 3001  
See our Single Bottles, Packages and Other Records  
CENTRAL 2104

MAY, 1963

FROM  
OFF-LICENCES  
EVERYWHERE

LE MASURIER'S  
Quality  
Sheries

Superb  
Golden Cream  
Jersey Cream  
Amontillado  
Manzanilla

Jersey's  
most popular  
RUM  
LE MASURIER'S



Merchants Square – A brand-new destination development for St Helier.

Enjoy and experience the convenience of living a short stroll from your favourite places to eat, shop, work out and relax. Our collection of one and two-bedroom apartments are set around a peaceful courtyard garden, offering you sanctuary from the hustle and bustle when you need it, just moments away from all that the town centre has to offer.



Your home.  
Your lifestyle.





*Fine wine has been part of our story at Le Masurier for nearly 200 years. It is important to us that Merchants Square reflects our history, so we have carefully chosen a unique name, design and colour scheme for each of the five areas of the development that celebrate our love of red, white and port wines. From the concept stage of this development, our designers were tasked with creating something special; you will not be disappointed.*

Brian McCarthy, Managing Director, Le Masurier

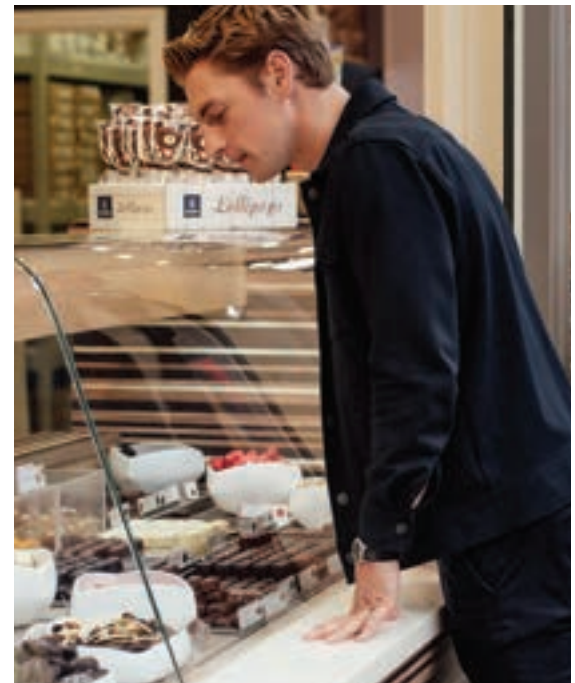
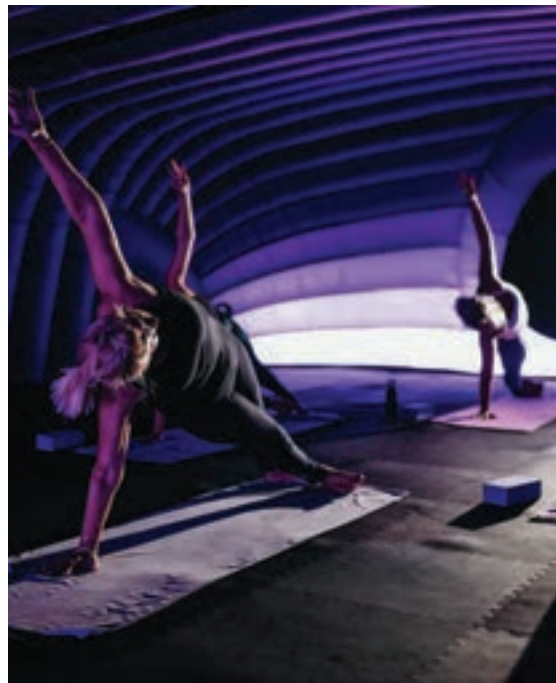


## Merchants Square will transform Bath Street.

It is not surprising that this upcoming new neighbourhood has become a highly sought-after location as it has everything that St Helier offers right on your doorstep.











Perfectly located  
for you to access  
convenient  
contemporary  
living.

A stunning restaurant and a new hotel will form an integral part of Merchants Square, where you will be able to enjoy alfresco dining on a new pedestrianised street that will link the town park to the library and Central Market.







This street, where you will find beautiful planting and casual seating, will be the perfect route to your favourite coffee shop, bar or restaurant.

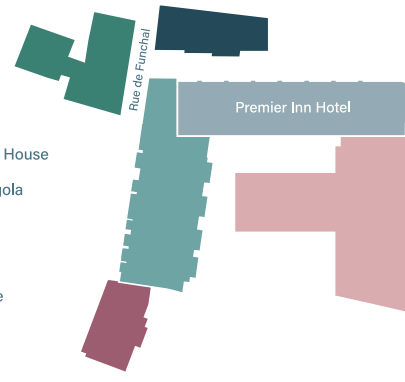
Work or play is just a short stroll away.







## MERCHANTS SQUARE



- The Port House
- The Pergola
- Soave
- Rioja
- Amarone

- |                         |              |
|-------------------------|--------------|
| 1 Millennium Park       | 2 mins walk  |
| 2 Grande Marché         | 7 mins walk  |
| 3 Library               | 2 mins walk  |
| 4 Bean Around The World | 3 mins walk  |
| 5 Art Centre            | 3 mins walk  |
| 6 Hot Pod Yoga          | 3 mins walk  |
| 7 Fish Market           | 3 mins walk  |
| 8 Banjos                | 4 mins walk  |
| 9 The Central Market    | 4 mins walk  |
| 10 Town Centre          | 8 mins walk  |
| 11 West Centre          | 4 mins walk  |
| 12 The Royal Yacht      | 11 mins walk |



This is a home  
where you will find  
space to breathe.



From the moment that you step into  
Merchants Square, you will be impressed  
by the streamlined design and quality.





Our collection of 1 and 2-bedroom apartments have been carefully planned and thought out by our team of designers and architects to maximise open space. Each apartment has a balcony or terrace and access to a communal terrace.



#### Flooring

- Amtico style flooring to kitchen, living area, hallways and cupboard
- Carpets to bedrooms
- Ceramic tiles to bathroom and ensuites



The spacious open-plan living and dining area includes a high-specification kitchen complete with integrated appliances, Minerva stone worktops and seamless handleless units.

The modern, stylish bathrooms are beautifully finished with white ceramic wall and floor tiles and chrome fittings.



#### Bathroom/Ensuites

- Modern finished bathrooms with white sanitaryware and chrome fittings
- Full width mirror above basin
- Under sink double drawer vanity units
- Western cool touch thermostatic mixer shower
- Full height ceramic tiles around bath and shower enclosures
- Ceramic floor tiles
- Wall mounted electric towel rail in chrome

#### Kitchen

- Omega English rose kitchen with handleless cupboards
- Minerva solid worktop with upstand
- Minerva bowl with recessed drainer and stainless steel sink with chrome mixer tap
- Integrated appliances including single oven, microwave, ceramic hob, fridge freezer and dishwasher
- Appliance space and services provided for freestanding washer/dryer in utility cupboard





#### Finishes

- Internal walls and ceilings in white matt emulsion
- Internal woodwork white satin
- Internal door solid core in white with brushed chrome ironmongery
- External apartment door 2 panel painted grey with brushed chrome ironmongery
- Dark grey metal balustrades to balconies
- All balconies and terraces include an outside light
- Double glazing throughout

#### Electric

- Audio door entry handset linked to main communal panel
- Brushed chrome and white sockets
- Downlighters fitted to kitchen, living area and bathroom
- Pendant fittings to bedrooms
- Mains operated smoke alarms/heat detectors
- Sky + HD points in living area and network points to bedrooms
- Electric slim contemporary panel heaters
- Electric hot water cylinder in utility cupboard

#### External

- Locked communal bicycle store for all apartments
- Secure parking
- Soft landscaping communal areas, only accessible from certain blocks
- Roof terraces, only accessible from certain blocks



**amarone**





## Amarone

# First floor

[16] one and two bedroom apartments

- One bedroom
- Two bedrooms

### Apartment A101

69.25 sqm plus 10.37 balcony

1. Kitchen/Living Room 3.5 x 7.3m
2. Bathroom 2.0 x 2.2m
3. Master Bedroom 2.7 x 5.2m
4. Bedroom 2 2.5 x 3.7m
5. Utility 1.2 x 1.7m
6. Balcony 1.6 x 5.8m

### Apartment A102

64.27 sqm plus 15.30 balcony

1. Kitchen/Living Room 3.5 x 7.3m
2. Bathroom 2.0 x 2.2m
3. Master Bedroom 2.7 x 3.8m
4. Bedroom 2 2.5 x 3.8m
5. Utility 1.2 x 1.5m  
+ consumer unit 1.0 x 0.3m
6. Balcony 1.7 x 9.0m

### Apartment A103

65.61 sqm plus 15.47 balcony

1. Kitchen/Living Room 3.4 x 7.3m
2. Bathroom 2.0 x 2.2m
3. Master Bedroom 3.2 x 3.8m
4. Bedroom 2 2.3 x 3.8m
5. Utility 0.8 x 2.2m
6. Balcony 1.7 x 9.1m

### Apartment A104

65.61 sqm plus 15.81 balcony

1. Kitchen/Living Room 3.7 x 7.3m
2. Bathroom 2.0 x 2.2m
3. Master Bedroom 2.8 x 4.9m
4. Bedroom 2 2.4 x 3.7m
5. Utility 0.8 x 1.9m
6. Balcony 1.7 x 9.3m

### Apartment A105

52.56 sqm plus 12.24 balcony

1. Kitchen/Living Room 3.8 x 7.3m
2. Bathroom 2.0 x 2.2m
3. Bedroom 3.4 x 4.9m
4. Utility 0.8 x 1.9m
5. Balcony 1.7 x 7.2m

### Apartment A106

52.56 sqm plus 12.24 balcony

1. Kitchen/Living Room 3.8 x 7.3m
2. Bathroom 2.0 x 2.2m
3. Bedroom 3.4 x 4.9m
4. Utility 0.8 x 2.2m
5. Balcony 1.7 x 7.2m

### Apartment A107

74.83 sqm plus 12.07 balcony

1. Kitchen/Living Room 3.9 x 11.4m
2. Bathroom 2.0 x 2.2m
3. Master Bedroom 3.0 x 3.7m
4. Bedroom 2 2.9 x 3.7m
5. Utility 0.8 x 2.2m
6. Balcony 1.7 x 7.1m

### Apartment A108

49.30 sqm plus 13.65 balcony

1. Kitchen/Living Room 3.5 x 6.7m
2. Bathroom 2.0 x 2.2m
3. Bedroom 3.2 x 3.8m
5. Utility 0.8 x 1.7m
6. Balcony 2.1 x 6.5m

### Apartment A109

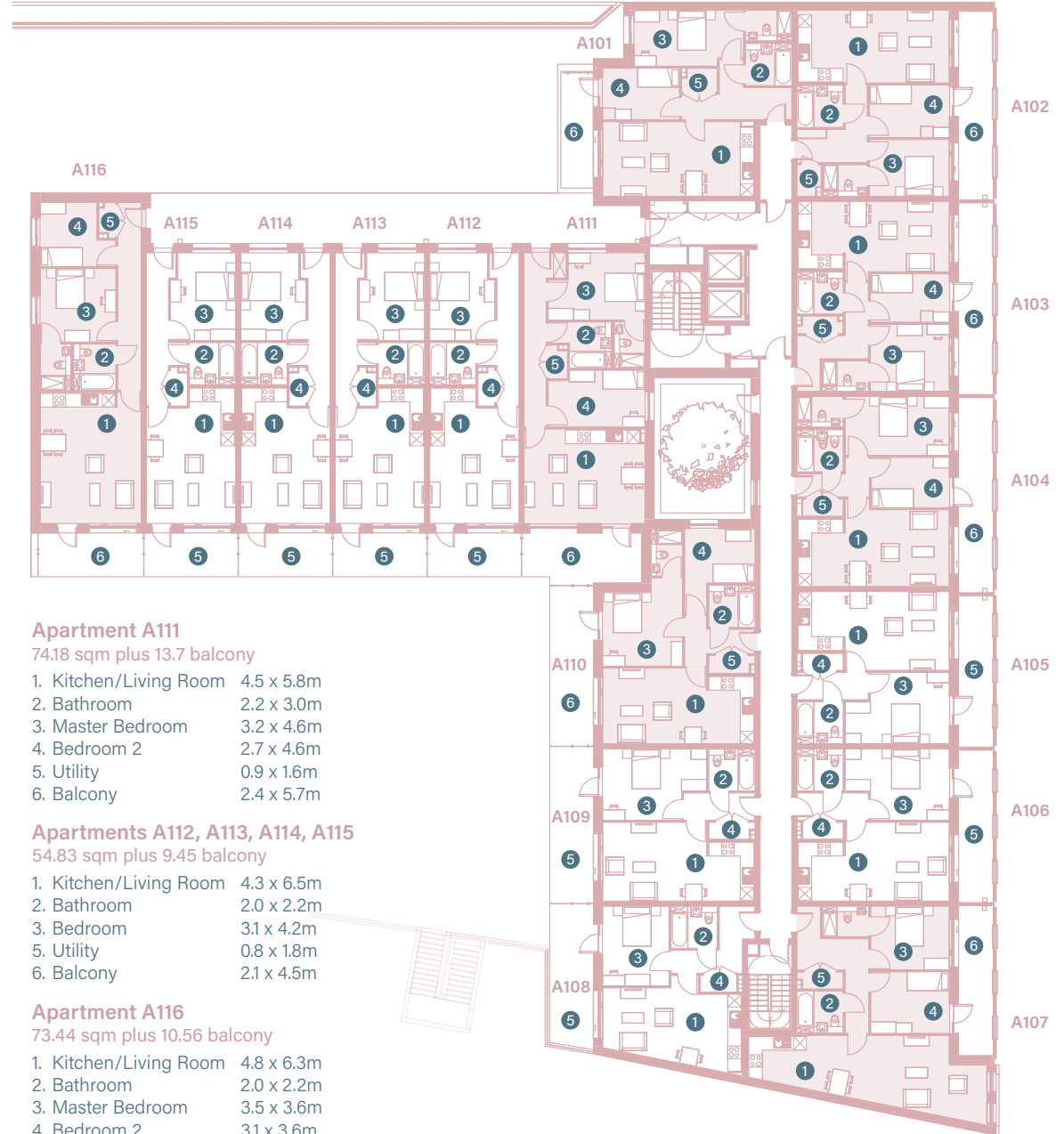
52.56 sqm plus 15.75 balcony

1. Kitchen/Living Room 3.8 x 7.3m
2. Bathroom 2.0 x 2.2m
3. Bedroom 3.4 x 4.9m
4. Utility 0.8 x 2.2m
5. Balcony 2.1 x 7.5m

### Apartment A110

67.05 sqm plus 15.96 balcony

1. Kitchen/Living Room 3.6 x 7.3m
2. Bathroom 2.0 x 2.2m
3. Master Bedroom 3.8 x 4.2m
4. Bedroom 2 3.4 x 4.1m
5. Utility 0.9 x 2.2m
6. Balcony 2.1 x 7.6m



### Apartment A111

74.18 sqm plus 13.7 balcony

1. Kitchen/Living Room 4.5 x 5.8m
2. Bathroom 2.2 x 3.0m
3. Master Bedroom 3.2 x 4.6m
4. Bedroom 2 2.7 x 4.6m
5. Utility 0.9 x 1.6m
6. Balcony 2.4 x 5.7m

### Apartments A112, A113, A114, A115

54.83 sqm plus 9.45 balcony

1. Kitchen/Living Room 4.3 x 6.5m
2. Bathroom 2.0 x 2.2m
3. Bedroom 3.1 x 4.2m
5. Utility 0.8 x 1.8m
6. Balcony 2.1 x 4.5m

### Apartment A116

73.44 sqm plus 10.56 balcony

1. Kitchen/Living Room 4.8 x 6.3m
2. Bathroom 2.0 x 2.2m
3. Master Bedroom 3.5 x 3.6m
4. Bedroom 2 3.1 x 3.6m
5. Utility 0.8 x 1.7m
6. Balcony 2.1 x 5.0m



Amarone

# Second floor

[16] one and two bedroom apartments

- One bedroom
- Two bedrooms

### Apartment A201

69.25 sqm plus 10.37 balcony

- 1. Kitchen/Living Room 3.5 x 7.3m
- 2. Bathroom 2.0 x 2.2m
- 3. Master Bedroom 2.7 x 5.2m
- 4. Bedroom 2 2.5 x 3.7m
- 5. Utility 1.2 x 1.7m
- 6. Balcony 1.5 x 5.5m

### Apartment A202

64.27 sqm plus 15.30 balcony

- 1. Kitchen/Living Room 3.5 x 7.3m
- 2. Bathroom 2.0 x 2.2m
- 3. Master Bedroom 2.7 x 3.8m
- 4. Bedroom 2 2.5 x 3.8m
- 5. Utility 1.2 x 1.5m  
+ consumer unit
- 6. Balcony 1.7 x 9.0m

### Apartment A203

65.61 sqm plus 15.47 balcony

- 1. Kitchen/Living Room 3.4 x 7.3m
- 2. Bathroom 2.0 x 2.2m
- 3. Master Bedroom 3.2 x 3.8m
- 4. Bedroom 2 2.3 x 3.8m
- 5. Utility 0.8 x 2.2m
- 6. Balcony 1.7 x 9.1m

### Apartment A204

65.61 sqm plus 15.81 balcony

- 1. Kitchen/Living Room 3.7 x 7.3m
- 2. Bathroom 2.0 x 2.2m
- 3. Master Bedroom 2.8 x 4.9m
- 4. Bedroom 2 2.4 x 3.7m
- 5. Utility 0.8 x 1.9m
- 6. Balcony 1.7 x 9.3m

### Apartment A205

52.56 sqm plus 12.24 balcony

- 1. Kitchen/Living Room 3.8 x 7.3m
- 2. Bathroom 2.0 x 2.2m
- 3. Bedroom 3.4 x 4.9m
- 4. Utility 0.8 x 1.9m
- 5. Balcony 1.7 x 7.2m

### Apartment A206

52.56 sqm plus 12.24 balcony

- 1. Kitchen/Living Room 3.8 x 7.3m
- 2. Bathroom 2.0 x 2.2m
- 3. Bedroom 3.4 x 4.9m
- 4. Utility 0.8 x 1.9m
- 5. Balcony 1.7 x 7.2m

### Apartment A207

72.90 sqm plus 12.07 balcony

- 1. Kitchen/Living Room 3.6 x 9.6m
- 2. Bathroom 2.0 x 2.2m
- 3. Master Bedroom 3.0 x 3.7m
- 4. Bedroom 2 2.9 x 3.7m
- 5. Utility 0.8 x 2.2m
- 6. Balcony 1.7 x 7.1m

### Apartment A208

49.30 sqm plus 8.25 balcony

- 1. Kitchen/Living Room 3.5 x 6.7m
- 2. Bathroom 2.0 x 2.2m
- 3. Bedroom 3.2 x 3.8m
- 4. Utility 0.8 x 1.7m
- 5. Balcony 1.5 x 5.5m

### Apartment A209 **SOLD**

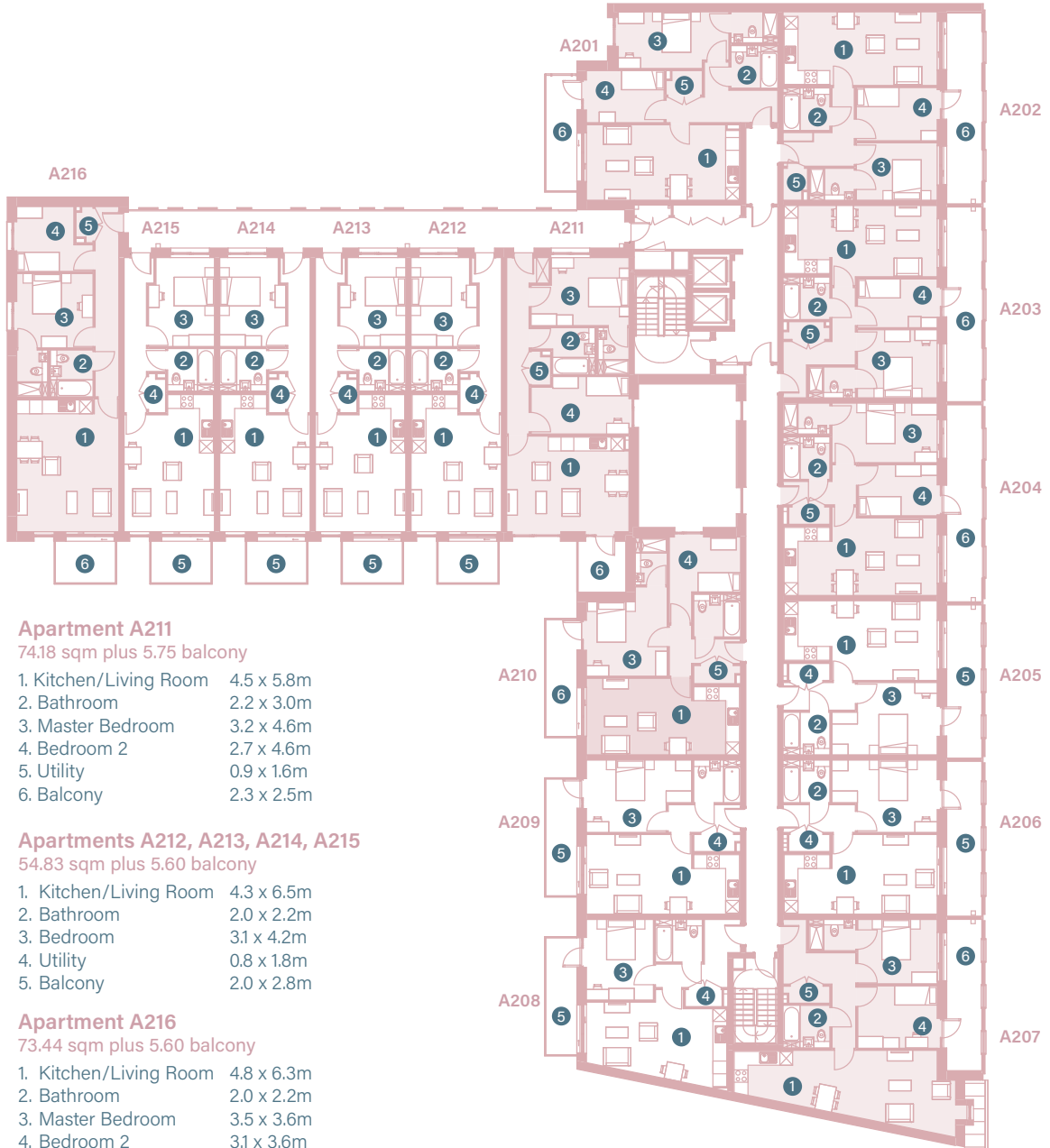
52.56 sqm plus 8.25 balcony

- 1. Kitchen/Living Room 3.8 x 7.3m
- 2. Bathroom 2.0 x 2.2m
- 3. Bedroom 3.4 x 4.9m
- 4. Utility 0.8 x 2.2m
- 5. Balcony 1.5 x 5.5m

### Apartment A210

67.05 sqm plus 8.25 balcony

- 1. Kitchen/Living Room 3.6 x 7.3m
- 2. Bathroom 2.0 x 2.2m
- 3. Master Bedroom 3.8 x 4.2m
- 4. Bedroom 2 3.4 x 4.1m
- 5. Utility 0.9 x 2.2m
- 6. Balcony 1.5 x 5.5m



### Apartment A211

74.18 sqm plus 5.75 balcony

- 1. Kitchen/Living Room 4.5 x 5.8m
- 2. Bathroom 2.2 x 3.0m
- 3. Master Bedroom 3.2 x 4.6m
- 4. Bedroom 2 2.7 x 4.6m
- 5. Utility 0.9 x 1.6m
- 6. Balcony 2.3 x 2.5m

### Apartments A212, A213, A214, A215

54.83 sqm plus 5.60 balcony

- 1. Kitchen/Living Room 4.3 x 6.5m
- 2. Bathroom 2.0 x 2.2m
- 3. Bedroom 3.1 x 4.2m
- 4. Utility 0.8 x 1.8m
- 5. Balcony 2.0 x 2.8m

### Apartment A216

73.44 sqm plus 5.60 balcony

- 1. Kitchen/Living Room 4.8 x 6.3m
- 2. Bathroom 2.0 x 2.2m
- 3. Master Bedroom 3.5 x 3.6m
- 4. Bedroom 2 3.1 x 3.6m
- 5. Utility 0.8 x 1.7m
- 6. Balcony 2.0 x 2.8m





## Amarone

# Third floor

[15] one and two bedroom apartments

□ One bedroom

■ Two bedrooms

### Apartment A301

69.25 sqm plus 8.25 balcony

1. Kitchen/Living Room 3.5 x 7.3m
2. Bathroom 2.0 x 2.2m
3. Master Bedroom 2.7 x 5.2m
4. Bedroom 2 2.5 x 3.7m
5. Utility 1.2 x 1.7m
6. Balcony 1.5 x 5.5m

### Apartment A302

64.27 sqm plus 15.30 balcony

1. Kitchen/Living Room 3.5 x 7.3m
2. Bathroom 2.0 x 2.2m
3. Master Bedroom 2.7 x 3.8m
4. Bedroom 2 2.5 x 3.8m
5. Utility 1.2 x 1.5m  
+ consumer unit 1.0 x 0.3m
6. Balcony 1.7 x 9.0m

### Apartment A303

65.61 sqm plus 15.47 balcony

1. Kitchen/Living Room 3.5 x 7.3m
2. Bathroom 2.0 x 2.2m
3. Master Bedroom 3.2 x 3.8m
4. Bedroom 2 2.3 x 3.7m
5. Utility 0.8 x 2.2m
6. Balcony 1.7 x 9.1m

### Apartment A304

65.61 sqm plus 15.81 balcony

1. Kitchen/Living Room 3.7 x 7.3m
2. Bathroom 2.0 x 2.2m
3. Master Bedroom 2.8 x 4.9m
4. Bedroom 2 2.4 x 3.7m
5. Utility 0.8 x 1.9m
6. Balcony 1.7 x 9.3m

### Apartment A305

52.56 sqm plus 12.24 balcony

1. Kitchen/Living Room 3.8 x 7.3m
2. Bathroom 2.0 x 2.2m
3. Bedroom 3.4 x 4.9m
4. Utility 0.8 x 2.2m
5. Balcony 1.7 x 7.2m

### Apartment A306

65.67 sqm plus 11.2 balcony

1. Kitchen/Living Room 3.7 x 7.3m
2. Bathroom 2.0 x 2.2m
3. Master Bedroom 2.8 x 5.0m
4. Bedroom 2 2.4 x 3.8m
5. Utility 0.8 x 1.9m
6. Balcony 1.5 x 7.1m

### Apartment A307

49.30 sqm plus 8.25 balcony

1. Kitchen/Living Room 3.7 x 6.7m
2. Bathroom 2.0 x 2.2m
3. Bedroom 3.2 x 3.8m
4. Utility 0.8 x 1.7m
5. Balcony 1.5 x 5.5m

### Apartment A308 **SOLD**

52.56 sqm plus 8.25 balcony

1. Kitchen/Living Room 3.8 x 7.3m
2. Bathroom 2.0 x 2.2m
3. Bedroom 3.4 x 4.9m
4. Utility 0.8 x 2.2m
5. Balcony 1.5 x 5.5m

### Apartment A309 **SOLD**

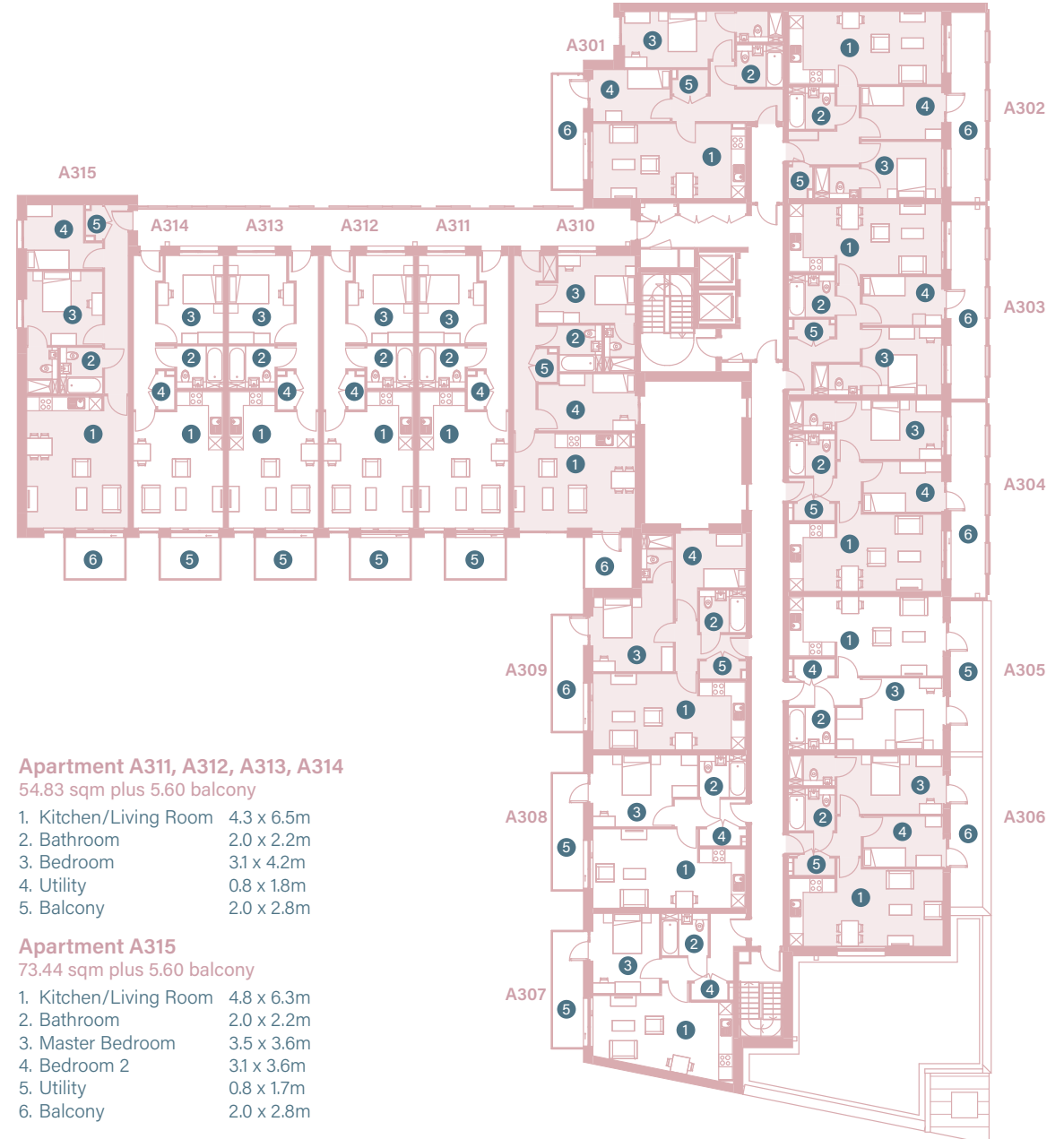
67.05 sqm plus 8.25 balcony

1. Kitchen/Living Room 3.6 x 7.3m
2. Bathroom 2.0 x 2.2m
3. Master Bedroom 3.8 x 4.2m
4. Bedroom 2 3.4 x 4.1m
5. Utility 0.9 x 2.2m
6. Balcony 1.5 x 5.5m

### Apartment A310

74.18 sqm plus 5.75 balcony

1. Kitchen/Living Room 4.5 x 5.8m
2. Bathroom 2.2 x 3.0m
3. Master Bedroom 3.2 x 4.6m
4. Bedroom 2 2.7 x 4.6m
5. Utility 0.9 x 1.6m
6. Balcony 2.4 x 2.5m



### Apartment A311, A312, A313, A314

54.83 sqm plus 5.60 balcony

1. Kitchen/Living Room 4.3 x 6.5m
2. Bathroom 2.0 x 2.2m
3. Bedroom 3.1 x 4.2m
4. Utility 0.8 x 1.8m
5. Balcony 2.0 x 2.8m

### Apartment A315

73.44 sqm plus 5.60 balcony

1. Kitchen/Living Room 4.8 x 6.3m
2. Bathroom 2.0 x 2.2m
3. Master Bedroom 3.5 x 3.6m
4. Bedroom 2 3.1 x 3.6m
5. Utility 0.8 x 1.7m
6. Balcony 2.0 x 2.8m

Amarone

# Fourth floor

[11] one and two bedroom apartments

- One bedroom
- Two bedrooms

## Apartment A401

69.25 sqm plus 8.25 balcony

- 1. Kitchen/Living Room 3.5 x 7.3m
- 2. Bathroom 2.0 x 2.2m
- 3. Master Bedroom 2.7 x 5.2m
- 4. Bedroom 2 2.5 x 3.7m
- 5. Utility 1.2 x 1.7m
- 6. Balcony 1.5 x 5.5m

## Apartment A402

64.27 sqm plus 15.30 balcony

- 1. Kitchen/Living Room 3.5 x 7.3m
- 2. Bathroom 2.0 x 2.2m
- 3. Master Bedroom 2.7 x 3.8m
- 4. Bedroom 2 2.5 x 3.8m
- 5. Utility 1.2 x 1.5m
- + consumer unit 1.0 x 0.3m
- 6. Balcony 1.7 x 9.0m

## Apartment A403

65.61 sqm plus 15.47 balcony

- 1. Kitchen/Living Room 3.4 x 7.3m
- 2. Bathroom 2.0 x 2.2m
- 3. Master Bedroom 3.2 x 3.8m
- 4. Bedroom 2 2.3 x 3.7m
- 5. Utility 0.8 x 2.2m
- 6. Balcony 1.7 x 9.1m

## Apartment A404

65.61 sqm plus 15.81 balcony

- 1. Kitchen/Living Room 3.7 x 7.3m
- 2. Bathroom 2.0 x 2.2m
- 3. Master Bedroom 2.8 x 4.9m
- 4. Bedroom 2 2.4 x 3.7m
- 5. Utility 0.8 x 1.9m
- 6. Balcony 1.7 x 9.3m

## Apartment A405 **SOLD**

84.9 sqm plus 27.04 balconies

- 1. Kitchen/Living Room 3.7 x 9.0m
- 2. Bathroom 2.0 x 2.2m
- 3. Master Bedroom 3.8 x 4.2m
- 4. Bedroom 2 2.8 x 3.9m
- 5. Utility 1.6 x 2.0m
- 6. Balconies (1.4 x 5.5m) + (2.4 x 7.9m)

## Apartment A406

74.18 sqm plus 5.75 balcony

- 1. Kitchen/Living Room 4.5 x 5.8m
- 2. Bathroom 2.2 x 3.0m
- 3. Master Bedroom 3.2 x 4.6m
- 4. Bedroom 2 2.7 x 4.6m
- 5. Utility 0.9 x 1.6m
- 6. Balcony 2.3 x 2.5m

## Apartment A407

54.83 sqm plus 5.60 balcony

- 1. Kitchen/Living Room 4.3 x 6.5m
- 2. Bathroom 2.0 x 2.2m
- 3. Bedroom 3.1 x 4.2m
- 4. Utility 0.8 x 1.8m
- 5. Balcony 2.0 x 2.8m

## Apartment A408

54.83 sqm plus 5.60 balcony

- 1. Kitchen/Living Room 4.3 x 6.5m
- 2. Bathroom 2.0 x 2.2m
- 3. Bedroom 3.1 x 4.2m
- 4. Utility 0.8 x 1.8m
- 5. Balcony 2.0 x 2.8m

## Apartment A409

54.83 sqm plus 5.60 balcony

- 1. Kitchen/Living Room 4.3 x 6.5m
- 2. Bathroom 2.0 x 2.2m
- 3. Bedroom 3.1 x 4.2m
- 4. Utility 0.8 x 1.8m
- 5. Balcony 2.0 x 2.8m

## Apartment A410

54.83 sqm plus 5.60 balcony

- 1. Kitchen/Living Room 4.3 x 6.5m
- 2. Bathroom 2.0 x 2.2m
- 3. Bedroom 3.1 x 4.2m
- 4. Utility 0.8 x 1.8m
- 5. Balcony 2.0 x 2.8m

## Apartment A411 **SOLD**

73.44 sqm plus 5.60 balcony

- 1. Kitchen/Living Room 4.8 x 6.3m
- 2. Bathroom 2.0 x 2.2m
- 3. Master Bedroom 3.5 x 3.6m
- 4. Bedroom 2 3.1 x 3.6m
- 5. Utility 0.8 x 1.7m
- 6. Balcony 2.0 x 2.8m







# Amarone Fifth floor

[5] one and two bedroom  
apartments

- One bedroom
- Two bedrooms



### Apartment A501 **SOLD**

74.18 sqm plus 17.76 balcony

- 1. Kitchen/Living Room 4.5 x 5.8m
- 2. Bathroom 2.2 x 3.0m
- 3. Master Bedroom 3.2 x 4.6m
- 4. Bedroom 2 2.7 x 4.6m
- 5. Utility 0.9 x 1.6m
- 6. Balcony 2.4 x 7.4m

### Apartment A502

54.83 sqm plus 5.60 balcony

- 1. Kitchen/Living Room 4.3 x 6.5m
- 2. Bathroom 2.0 x 2.2m
- 3. Bedroom 3.1 x 4.2m
- 4. Utility 0.8 x 1.8m
- 5. Balcony 2.0 x 2.8m

### Apartment A503

54.83 sqm plus 5.60 balcony

- 1. Kitchen/Living Room 4.3 x 6.5m
- 2. Bathroom 2.0 x 2.2m
- 3. Bedroom 3.1 x 4.2m
- 4. Utility 0.8 x 1.8m
- 5. Balcony 2.0 x 2.8m

### Apartment A504

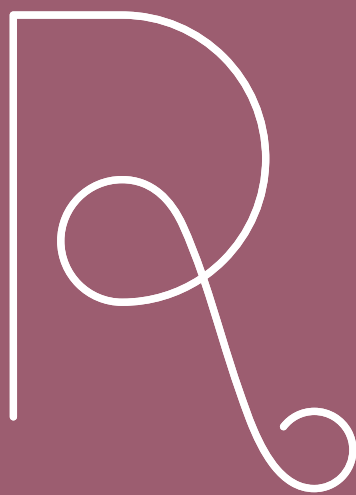
54.83 sqm plus 5.60 balcony

- 1. Kitchen/Living Room 4.3 x 6.5m
- 2. Bathroom 2.0 x 2.2m
- 3. Bedroom 3.1 x 4.2m
- 4. Utility 0.8 x 1.8m
- 5. Balcony 2.0 x 2.8m

### Apartment A505 **SOLD**

74.18 sqm plus 5.60 balcony

- 1. Kitchen/Living Room 4.5 x 5.8m
- 2. Bathroom 2.2 x 3.0m
- 3. Master Bedroom 3.2 x 4.6m
- 4. Bedroom 2 2.7 x 4.6m
- 5. Utility 0.9 x 1.6m
- 6. Balcony 2.0 x 2.8m



RIOJA





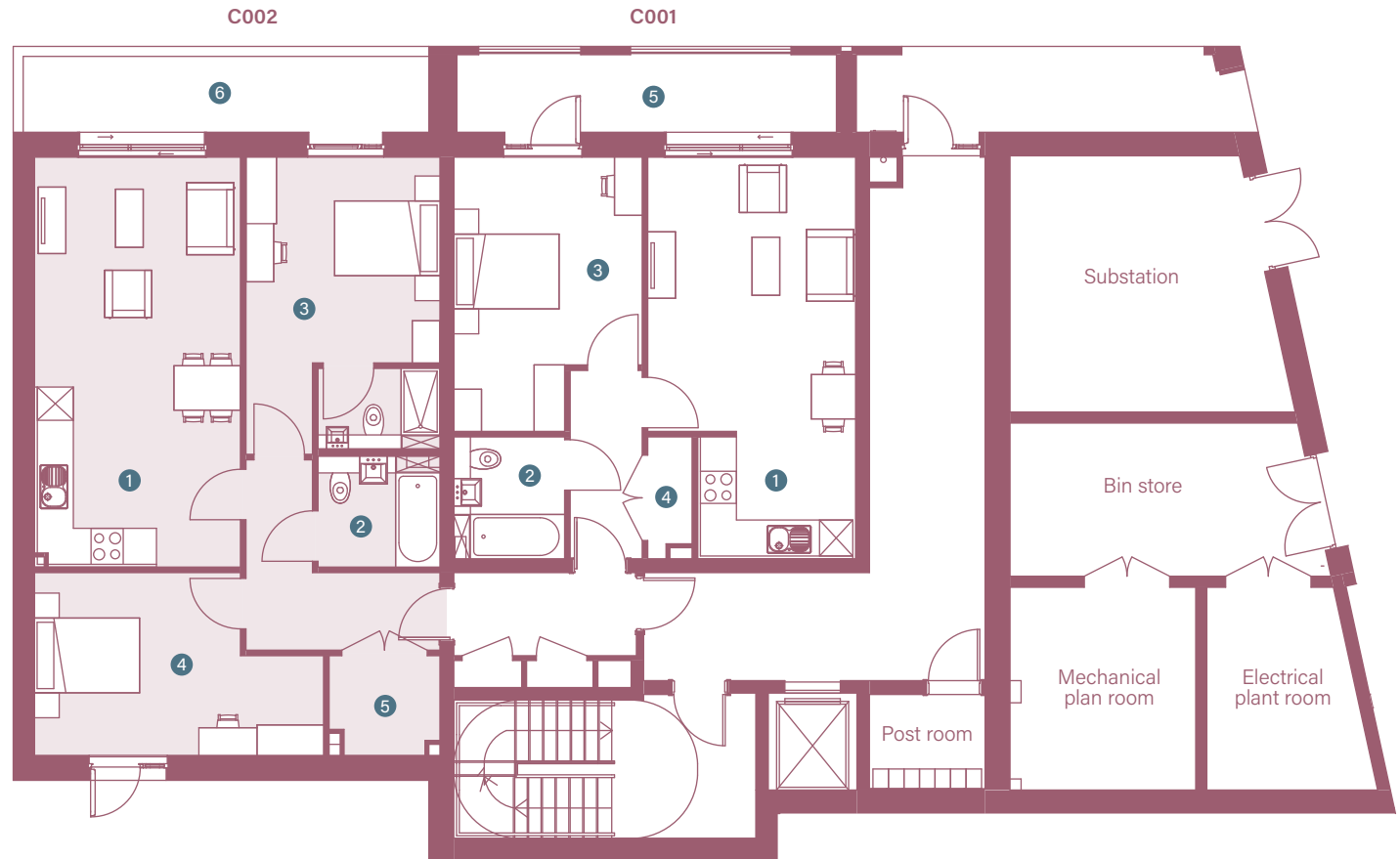


Rioja

# Ground floor

[2] one and two bedroom apartments

-  One bedroom
-  Two bedrooms



## Apartment C001

51.42 sqm plus 9.52 balcony

- 1. Kitchen/Living Room 3.8 x 7.3m
- 2. Bathroom 2.0 x 2.2m
- 3. Bedroom 3.4 x 5.0m
- 4. Utility 0.8 x 2.2m
- 5. Balcony 1.4 x 6.8m

## Apartment C002

78.41 sqm plus 33.47 balconies

- 1. Kitchen/Living Room 3.6 x 7.3m
- 2. Bathroom 2.0 x 2.2m
- 3. Master Bedroom 2.8 x 5.0m
- 4. Bedroom 2 2.4 x 3.7m
- 5. Utility 0.8 x 2.2m
- 6. Balconies (1.4 x 7.3m) + (3.1 x 7.5m)

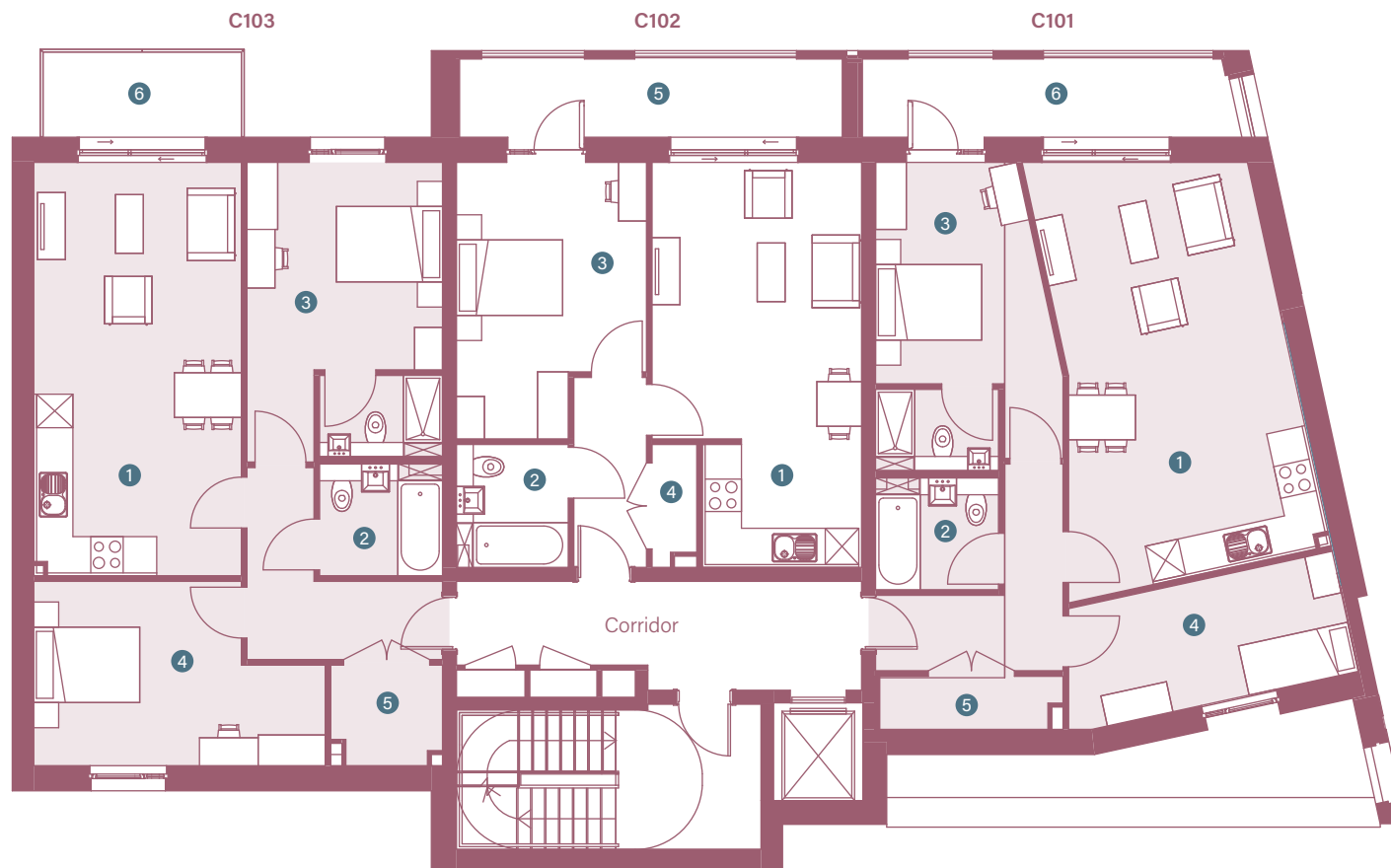


Rioja

# First floor

[3] one and two bedroom apartments

- One bedroom
- Two bedrooms



## Apartment C101

76.18 sqm plus 9.30 balcony

- 1. Kitchen/Living Room 4.0 x 7.0m
- 2. Bathroom 2.0 x 2.2m
- 3. Master Bedroom 2.5 x 5.3m
- 4. Bedroom 2 2.2 x 5.3m
- 5. Utility 1.0 x 3.3m
- 6. Balcony 1.4 x 6.4m

## Apartment C102

51.42 sqm plus 9.52 balcony

- 1. Kitchen/Living Room 3.8 x 7.3m
- 2. Bathroom 2.0 x 2.2m
- 3. Bedroom 3.4 x 5.0m
- 4. Utility 0.8 x 2.2m
- 5. Balcony 1.4 x 6.8m

## Apartment C103

78.41 sqm plus 5.4 balcony

- 1. Kitchen/Living Room 3.6 x 7.3m
- 2. Bathroom 2.0 x 2.2m
- 3. Master Bedroom 2.8 x 5.0m
- 4. Bedroom 2 2.4 x 3.7m
- 5. Utility 0.8 x 2.2m
- 6. Balcony 1.5 x 3.6m



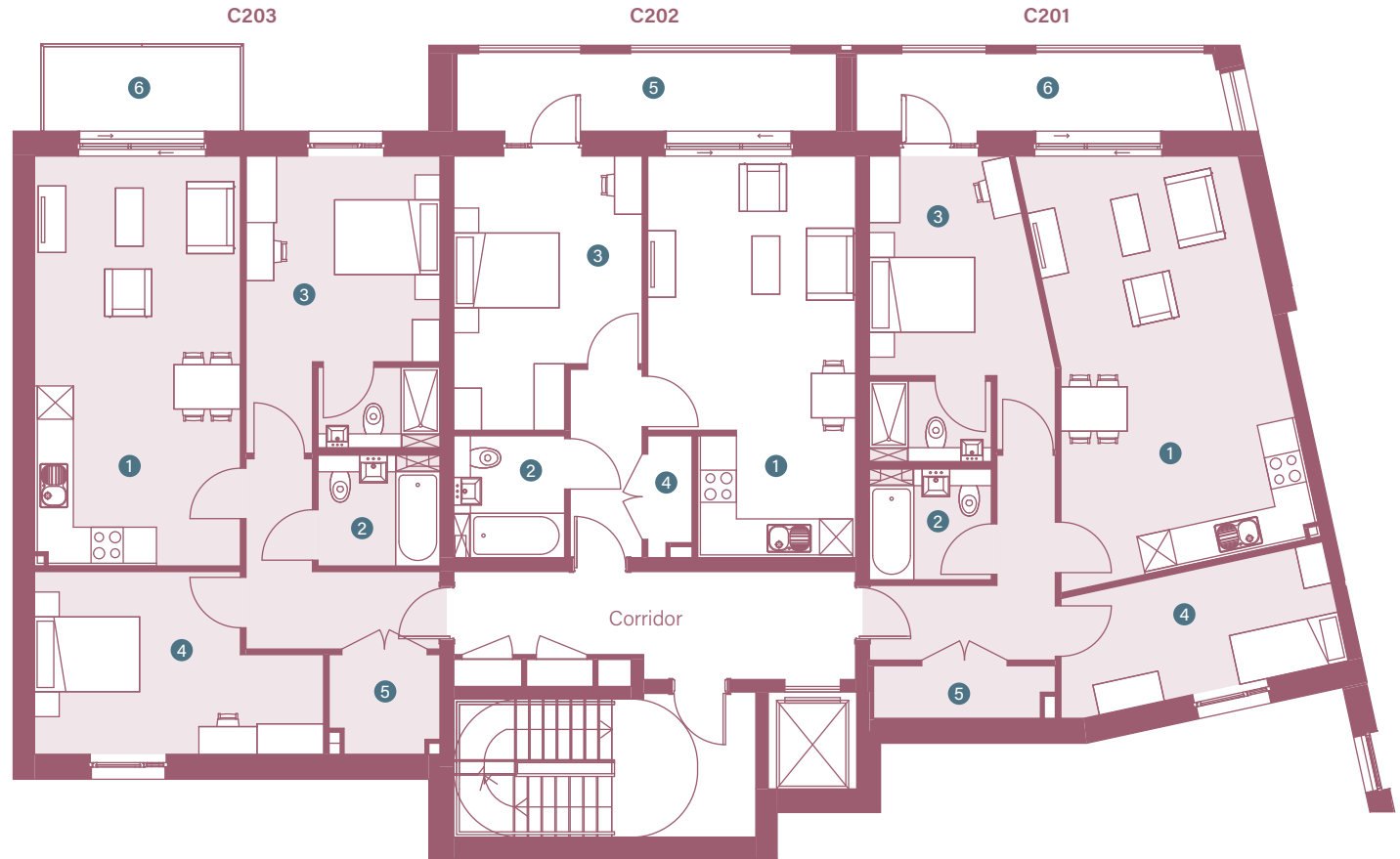


Rioja

# Second floor

[3] one and two bedroom apartments

- One bedroom
- Two bedrooms



## Apartment C201

76.18 sqm plus 9.30 balcony

- 1. Kitchen/Living Room 4.0 x 7.0m
- 2. Bathroom 2.0 x 2.2m
- 3. Master Bedroom 2.5 x 5.3m
- 4. Bedroom 2 2.2 x 5.3m
- 5. Utility 1.0 x 3.3m
- 6. Balcony 1.4 x 6.4m

## Apartment C202

51.42 sqm plus 9.52 balcony

- 1. Kitchen/Living Room 3.8 x 7.3m
- 2. Bathroom 2.0 x 2.2m
- 3. Bedroom 3.4 x 5.0m
- 4. Utility 0.8 x 2.2m
- 5. Balcony 1.4 x 6.8m

## Apartment C203

78.41 sqm plus 5.40 balcony

- 1. Kitchen/Living Room 3.6 x 7.3m
- 2. Bathroom 2.0 x 2.2m
- 3. Master Bedroom 2.8 x 5.0m
- 4. Bedroom 2 2.4 x 3.7m
- 5. Utility 0.8 x 2.2m
- 6. Balcony 1.5 x 3.6m

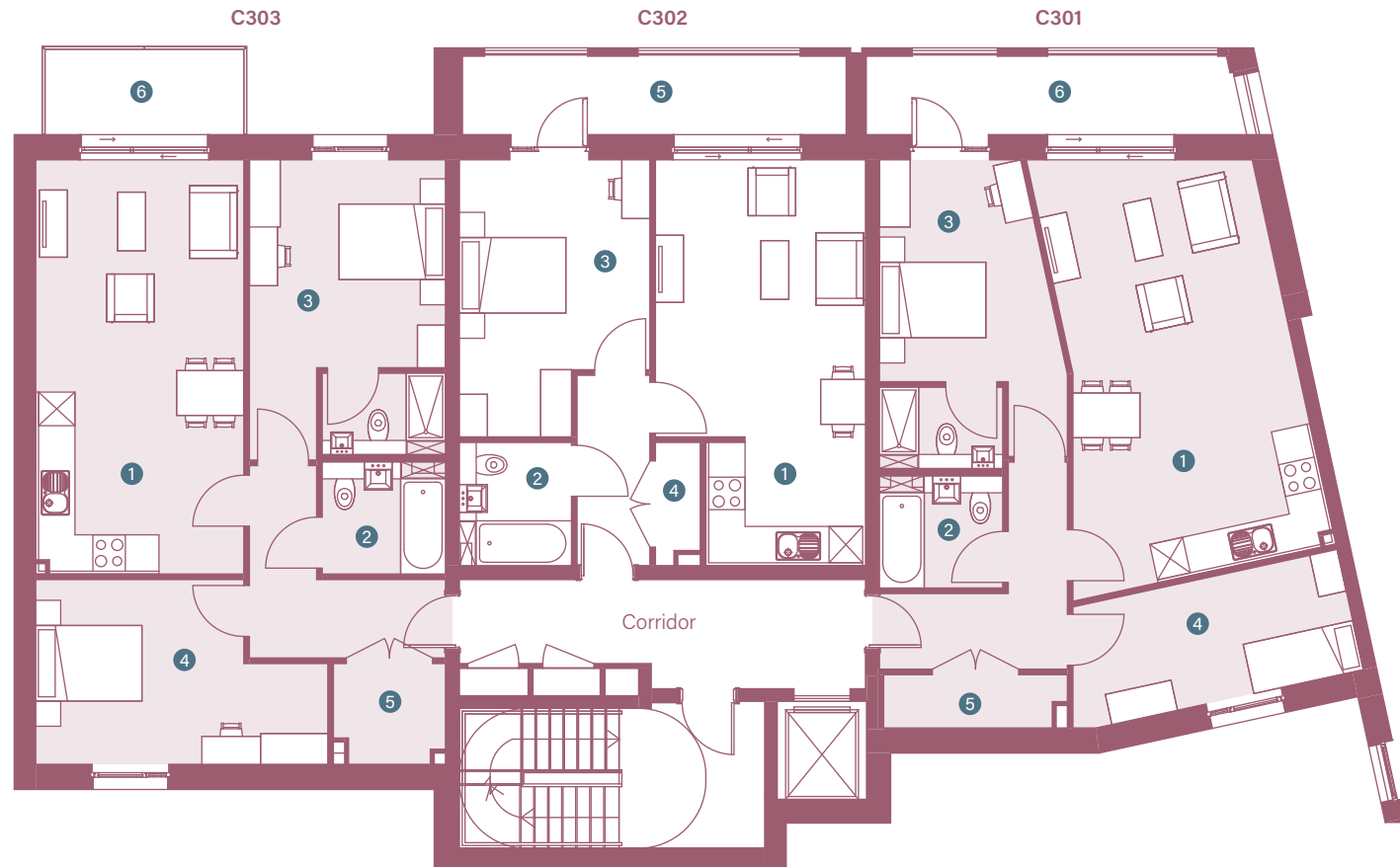


# Rioja

## Third floor

[3] one and two bedroom apartments

- One bedroom
- Two bedrooms



### Apartment C301

76.18 sqm plus 9.3 balcony

- 1. Kitchen/Living Room 4.0 x 7.0m
- 2. Bathroom 2.0 x 2.2m
- 3. Master Bedroom 2.5 x 5.3m
- 4. Bedroom 2 2.2 x 5.3m
- 5. Utility 1.0 x 3.3m
- 6. Balcony 1.4 x 6.4m

### Apartment C302

51.42 sqm plus 9.52 balcony

- 1. Kitchen/Living Room 3.8 x 7.3m
- 2. Bathroom 2.0 x 2.2m
- 3. Bedroom 3.4 x 5.0m
- 4. Utility 0.8 x 2.2m
- 5. Balcony 1.4 x 6.8m

### Apartment C303

78.41 sqm plus 5.4 balcony

- 1. Kitchen/Living Room 3.6 x 7.3m
- 2. Bathroom 2.0 x 2.2m
- 3. Master Bedroom 2.8 x 5.0m
- 4. Bedroom 2 2.4 x 3.7m
- 5. Utility 0.8 x 2.2m
- 6. Balcony 1.5 x 3.6m



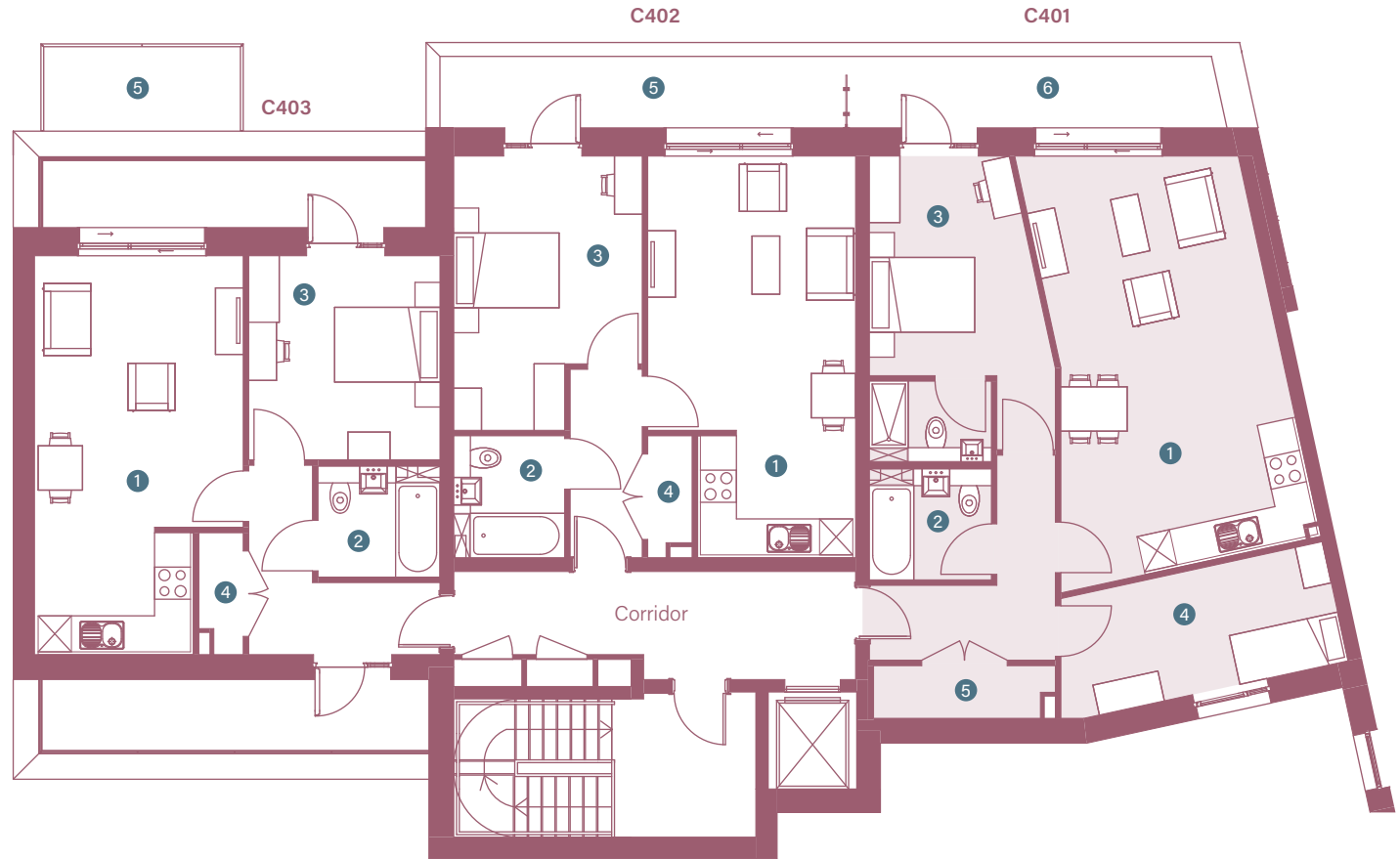


Rioja

# Fourth floor

[3] one and two bedroom apartments

- One bedroom
- Two bedrooms



## Apartment C401

76.18 sqm plus 8.68 balcony

- |                        |            |
|------------------------|------------|
| 1. Kitchen/Living Room | 4.0 x 7.0m |
| 2. Bathroom            | 2.0 x 2.2m |
| 3. Master Bedroom      | 2.5 x 5.3m |
| 4. Bedroom 2           | 2.2 x 5.3m |
| 5. Utility             | 1.0 x 3.3m |
| 6. Balcony             | 1.3 x 6.9m |

## Apartment C402

51.42 sqm plus 9.30 balcony

- |                        |            |
|------------------------|------------|
| 1. Kitchen/Living Room | 3.8 x 7.3m |
| 2. Bathroom            | 2.0 x 2.2m |
| 3. Bedroom             | 3.4 x 5.0m |
| 4. Utility             | 0.8 x 2.2m |
| 5. Balcony             | 1.3 x 7.1m |

## Apartment C403

52.2 sqm plus 18.20 balconies

- |                        |                             |
|------------------------|-----------------------------|
| 1. Kitchen/Living Room | 3.8 x 7.2m                  |
| 2. Bathroom            | 2.0 x 2.2m                  |
| 3. Bedroom             | 3.5 x 3.7m                  |
| 4. Utility             | 0.8 x 2.2m                  |
| 5. Balconies           | (1.3 x 7.0m) + (1.3 x 7.0m) |



**soave**





Soave

# First floor

[11] one and two bedroom apartments

- One bedroom
- Two bedrooms



**Apartment B101**  
65.61 sqm plus 13.92 balcony

- 1. Kitchen/Living Room 3.6 x 7.3m
- 2. Bathroom 2.0 x 2.2m
- 3. Master Bedroom 2.8 x 5.0m
- 4. Bedroom 2 2.4 x 3.7m
- 5. Utility 0.8 x 2.2m
- 6. Balcony 1.6 x 8.7m

**Apartment B102**  
65.61 sqm plus 14.88 balcony

- 1. Kitchen/Living Room 3.6 x 7.3m
- 2. Bathroom 2.0 x 2.2m
- 3. Master Bedroom 2.8 x 5.0m
- 4. Bedroom 2 2.4 x 3.7m
- 5. Utility 0.8 x 2.2m
- 6. Balcony 1.6 x 9.3m

**Apartment B103**  
51.42 sqm plus 12.00 balcony

- 1. Kitchen/Living Room 3.8 x 7.3m
- 2. Bathroom 2.0 x 2.2m
- 3. Bedroom 3.4 x 5.0m
- 4. Utility 0.8 x 2.2m
- 5. Balcony 1.6 x 7.5m

**Apartment B104**  
51.42 sqm plus 9.44 balcony

- 1. Kitchen/Living Room 3.8 x 7.3m
- 2. Bathroom 2.0 x 2.2m
- 3. Bedroom 3.4 x 5.0m
- 4. Utility 0.8 x 2.2m
- 5. Balcony 1.6 x 5.9m

**Apartment B105**  
66.71 sqm plus 11.16 balconies

- 1. Kitchen/Living Room 3.7 x 7.6m
- 2. Bathroom 2.0 x 2.2m
- 3. Master Bedroom 2.9 x 5.0m
- 4. Bedroom 2 2.4 x 3.7m
- 5. Utility 0.8 x 2.2m
- 6. Balconies (1.6 x 3.6) + (1.5 x 3.6m)

**Apartment B106**  
54.74 sqm plus 5.40 balcony

- 1. Kitchen/Living Room 3.8 x 7.6m
- 2. Bathroom 2.0 x 2.2m
- 3. Bedroom 3.4 x 5.2m
- 4. Utility 0.9 x 2.2m
- 5. Balcony 1.5 x 3.6m

**Apartment B107**  
51.42 sqm plus 9.44 balcony

- 1. Kitchen/Living Room 3.8 x 7.3m
- 2. Bathroom 2.0 x 2.2m
- 3. Bedroom 3.4 x 5.0m
- 4. Utility 0.8 x 2.2m
- 5. Balcony 1.6 x 5.9m

**Apartment B108**  
54.74 sqm plus 5.40 balcony

- 1. Kitchen/Living Room 3.8 x 7.6m
- 2. Bathroom 2.0 x 2.2m
- 3. Bedroom 3.4 x 5.3m
- 4. Utility 0.9 x 2.2m
- 5. Balcony 1.5 x 3.6m

**Apartment B109**  
53.69 sqm plus 5.40 balcony

- 1. Kitchen/Living Room 3.8 x 7.6m
- 2. Bathroom 2.0 x 2.2m
- 3. Bedroom 3.4 x 5.0m
- 4. Utility 0.8 x 2.2m
- 5. Balcony 1.5 x 3.6m

**Apartment B110**  
51.72 sqm plus 5.40 balcony

- 1. Kitchen/Living Room 4.1 x 6.0m
- 2. Bathroom 2.0 x 2.2m
- 3. Bedroom 4.1 x 4.2m
- 4. Utility 0.8 x 2.2m
- 5. Balcony 1.5 x 3.6m

**Apartment B111**  
50.39 sqm plus 4.90 balcony

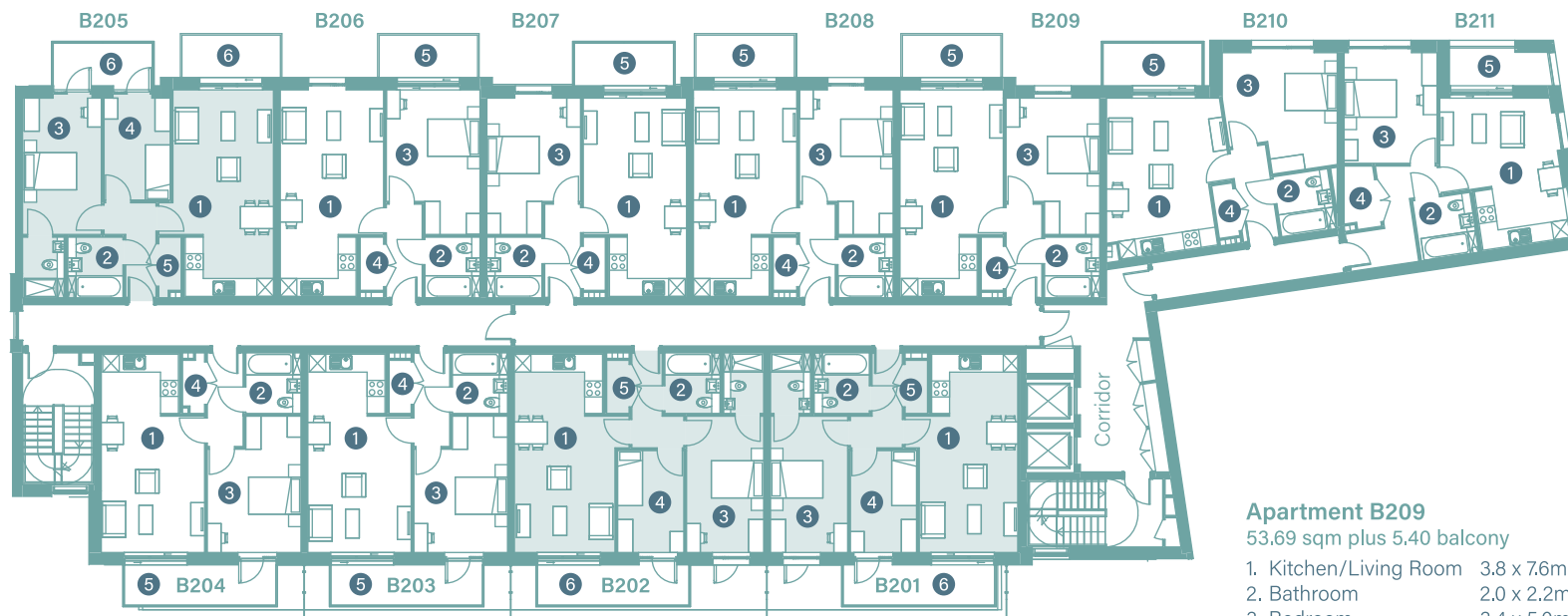
- 1. Kitchen/Living Room 4.0 x 5.2m
- 2. Bathroom 2.0 x 2.2m
- 3. Bedroom 3.4 x 4.0m
- 4. Utility 1.3 x 2.2m
- 5. Balcony 1.4 x 3.6m



# Soave Second floor

[11] one and two bedroom apartments

- One bedroom
- Two bedrooms



### Apartment B201

65.61 sqm plus 8,10 balcony

- 1. Kitchen/Living Room 3.6 x 7.3m
- 2. Bathroom 2.0 x 2.2m
- 3. Master Bedroom 2.8 x 5.0m
- 4. Bedroom 2 2.4 x 3.7m
- 5. Utility 0.8 x 2.2m
- 6. Balcony 1.5 x 5.5m

### Apartment B202

65.61 sqm plus 8,10 balcony

- 1. Kitchen/Living Room 3.6 x 7.3m
- 2. Bathroom 2.0 x 2.2m
- 3. Master Bedroom 2.8 x 5.0m
- 4. Bedroom 2 2.4 x 3.7m
- 5. Utility 0.8 x 2.2m
- 6. Balcony 1.5 x 5.5m

### Apartment B203

51.42 sqm plus 8,10 balcony

- 1. Kitchen/Living Room 3.8 x 7.3m
- 2. Bathroom 2.0 x 2.2m
- 3. Bedroom 3.4 x 5.0m
- 4. Utility 0.8 x 2.2m
- 5. Balcony 1.5 x 5.5m

### Apartment B204

51.42 sqm plus 8,10 balcony

- 1. Kitchen/Living Room 3.8 x 7.3m
- 2. Bathroom 2.0 x 2.2m
- 3. Bedroom 3.4 x 5.0m
- 4. Utility 0.8 x 2.2m
- 5. Balcony 1.5 x 5.5m

### Apartment B205

66.71 sqm plus 11,16 balconies

- 1. Kitchen/Living Room 3.7 x 7.6m
- 2. Bathroom 2.0 x 2.2m
- 3. Master Bedroom 2.9 x 5.0m
- 4. Bedroom 2 2.4 x 3.7m
- 5. Utility 0.8 x 2.2m
- 6. Balconies (1.6 x 3.6) + (1.5 x 3.6m)

### Apartment B206

54.74 sqm plus 5,40 balcony

- 1. Kitchen/Living Room 3.8 x 7.6m
- 2. Bathroom 2.0 x 2.2m
- 3. Bedroom 3.4 x 5.2m
- 4. Utility 0.9 x 2.2m
- 5. Balcony 1.5 x 3.6m

### Apartment B207

51.42 sqm plus 9,44 balcony

- 1. Kitchen/Living Room 3.8 x 7.3m
- 2. Bathroom 2.0 x 2.2m
- 3. Master Bedroom 3.4 x 5.0m
- 4. Utility 0.8 x 2.2m
- 5. Balcony 1.6 x 5.9m

### Apartment B208

54.74 sqm plus 5,40 balcony

- 1. Kitchen/Living Room 3.8 x 7.6m
- 2. Bathroom 2.0 x 2.2m
- 3. Bedroom 3.4 x 5.3m
- 4. Utility 0.9 x 2.2m
- 5. Balcony 1.5 x 3.6m

### Apartment B209

53.69 sqm plus 5,40 balcony

- 1. Kitchen/Living Room 3.8 x 7.6m
- 2. Bathroom 2.0 x 2.2m
- 3. Bedroom 3.4 x 5.0m
- 4. Utility 0.8 x 2.2m
- 5. Balcony 1.5 x 3.6m

### Apartment B210

51.72 sqm plus 5,40 balcony

- 1. Kitchen/Living Room 4.1 x 6.0m
- 2. Bathroom 2.0 x 2.2m
- 3. Bedroom 4.1 x 4.2m
- 4. Utility 0.8 x 2.2m
- 5. Balcony 1.5 x 3.6m

### Apartment B211

50.39 sqm plus 4,90 balcony

- 1. Kitchen/Living Room 4.0 x 5.2m
- 2. Bathroom 2.0 x 2.2m
- 3. Bedroom 3.4 x 4.0m
- 4. Utility 1.3 x 2.2m
- 5. Balcony 1.4 x 3.6m





Soave

# Third floor

[11] one and two bedroom apartments

- One bedroom
- Two bedrooms



**Apartment B301**  
65.61 sqm plus 8.10 balcony

- 1. Kitchen/Living Room 3.6 x 7.3m
- 2. Bathroom 2.0 x 2.2m
- 3. Master Bedroom 2.8 x 5.0m
- 4. Bedroom 2 2.4 x 3.7m
- 5. Utility 0.8 x 2.2m
- 6. Balcony 1.5 x 5.5m

**Apartment B302**  
65.61 sqm plus 8.10 balcony

- 1. Kitchen/Living Room 3.6 x 7.3m
- 2. Bathroom 2.0 x 2.2m
- 3. Master Bedroom 2.8 x 5.0m
- 4. Bedroom 2 2.4 x 3.7m
- 5. Utility 0.8 x 2.2m
- 6. Balcony 1.5 x 5.5m

**Apartment B303**  
51.42 sqm plus 8.10 balcony

- 1. Kitchen/Living Room 3.8 x 7.3m
- 2. Bathroom 2.0 x 2.2m
- 3. Bedroom 3.4 x 5.0m
- 4. Utility 0.8 x 2.2m
- 5. Balcony 1.5 x 5.5m

**Apartment B304**  
51.42 sqm plus 8.10 balcony

- 1. Kitchen/Living Room 3.8 x 7.3m
- 2. Bathroom 2.0 x 2.2m
- 3. Bedroom 3.4 x 5.0m
- 4. Utility 0.8 x 2.2m
- 5. Balcony 1.5 x 5.5m

**Apartment B305**  
66.71 sqm plus 11.16 balconies

- 1. Kitchen/Living Room 3.7 x 7.6m
- 2. Bathroom 2.0 x 2.2m
- 3. Master Bedroom 2.9 x 5.0m
- 4. Bedroom 2 2.4 x 3.7m
- 5. Utility 0.8 x 2.2m
- 6. Balconies (1.6 x 3.6) + (1.5 x 3.6m)

**Apartment B306**  
54.74 sqm plus 5.40 balcony

- 1. Kitchen/Living Room 3.8 x 7.6m
- 2. Bathroom 2.0 x 2.2m
- 3. Bedroom 3.4 x 5.2m
- 4. Utility 0.9 x 2.2m
- 5. Balcony 1.5 x 3.6m

**Apartment B307**  
51.42 sqm plus 9.44 balcony

- 1. Kitchen/Living Room 3.8 x 7.3m
- 2. Bathroom 2.0 x 2.2m
- 3. Bedroom 3.4 x 5.0m
- 4. Utility 0.8 x 2.2m
- 5. Balcony 1.6 x 5.9m

**Apartment B308**  
54.74 sqm plus 5.40 balcony

- 1. Kitchen/Living Room 3.8 x 7.6m
- 2. Bathroom 2.0 x 2.2m
- 3. Bedroom 3.4 x 5.3m
- 4. Utility 0.9 x 2.2m
- 5. Balcony 1.5 x 3.6m

**Apartment B309**  
53.69 sqm plus 5.40 balcony

- 1. Kitchen/Living Room 3.8 x 7.6m
- 2. Bathroom 2.0 x 2.2m
- 3. Bedroom 3.4 x 5.0m
- 4. Utility 0.8 x 2.2m
- 5. Balcony 1.5 x 3.6m

**Apartment B310**  
51.72 sqm plus 5.40 balcony

- 1. Kitchen/Living Room 4.1 x 6.0m
- 2. Bathroom 2.0 x 2.2m
- 3. Bedroom 4.1 x 4.2m
- 4. Utility 0.8 x 2.2m
- 5. Balcony 1.5 x 3.6m

**Apartment B311**  
50.39 sqm plus 4.90 balcony

- 1. Kitchen/Living Room 4.0 x 5.2m
- 2. Bathroom 2.0 x 2.2m
- 3. Bedroom 3.4 x 4.0m
- 4. Utility 1.3 x 2.2m
- 5. Balcony 1.4 x 3.6m

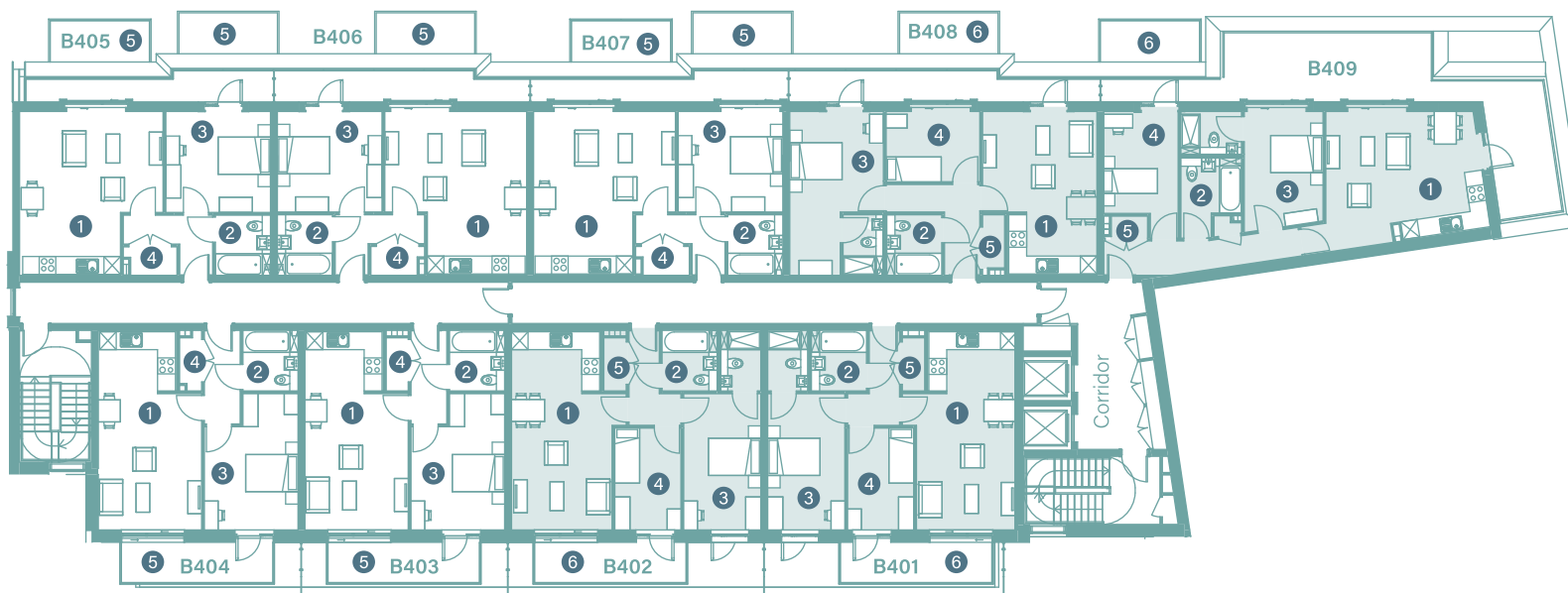


Soave

# Fourth floor

[9] one and two bedroom apartments

- One bedroom
- Two bedrooms



## Apartment B401

65.61 sqm plus 8.25 balcony

- 1. Kitchen/Living Room 3.6 x 7.3m
- 2. Bathroom 2.0 x 2.2m
- 3. Master Bedroom 2.8 x 5.0m
- 4. Bedroom 2 2.4 x 3.7m
- 5. Utility 0.8 x 2.2m
- 6. Balcony 1.5 x 5.5m

## Apartment B402

65.61 sqm plus 8.25 balcony

- 1. Kitchen/Living Room 3.6 x 7.3m
- 2. Bathroom 2.0 x 2.2m
- 3. Master Bedroom 2.8 x 5.0m
- 4. Bedroom 2 2.4 x 3.7m
- 5. Utility 0.8 x 2.2m
- 6. Balcony 1.5 x 5.5m

## Apartment B403

51.42 sqm plus 8.25 balcony

- 1. Kitchen/Living Room 3.8 x 7.3m
- 2. Bathroom 2.0 x 2.2m
- 3. Bedroom 3.4 x 5.0m
- 4. Utility 0.8 x 2.2m
- 5. Balcony 1.5 x 5.5m

## Apartment B404

51.42 sqm plus 8.25 balcony

- 1. Kitchen/Living Room 3.8 x 7.3m
- 2. Bathroom 2.0 x 2.2m
- 3. Bedroom 3.4 x 5.0m
- 4. Utility 0.8 x 2.2m
- 5. Balcony 1.5 x 5.5m

## Apartment B405

52.94 sqm plus 10.23 balcony

- 1. Kitchen/Living Room 5.2 x 6.0m
- 2. Bathroom 2.0 x 2.2m
- 3. Bedroom 3.7 x 3.8m
- 4. Utility 1.1 x 2.0m
- 5. Balcony 1.1 x 9.3m

## Apartment B406

52.94 sqm plus 10.23 balcony

- 1. Kitchen/Living Room 5.2 x 6.0m
- 2. Bathroom 2.0 x 2.2m
- 3. Bedroom 3.7 x 3.8m
- 4. Utility 1.1 x 2.0m
- 5. Balcony 1.1 x 9.3m

## Apartment B407

52.94 sqm plus 9.40 balcony

- 1. Kitchen/Living Room 5.2 x 6.0m
- 2. Bathroom 2.0 x 2.2m
- 3. Bedroom 3.7 x 3.8m
- 4. Utility 1.1 x 2.0m
- 5. Balcony 1.0 x 9.4m

## Apartment B408

65.23 sqm plus 12.43 balcony

- 1. Kitchen/Living Room 4.2 x 6.0m
- 2. Bathroom 2.0 x 2.2m
- 3. Master Bedroom 3.4 x 6.0m
- 4. Bedroom 2 2.6 x 3.4m
- 5. Utility 0.8 x 2.2m
- 6. Balcony 1.1 x 11.3m

## Apartment B409

70.53 sqm plus 37.75 balcony

- 1. Kitchen/Living Room 4.3 x 5.3m
- 2. Bathroom 2.2 x 2.9m
- 3. Master Bedroom 2.7 x 4.6m
- 4. Bedroom 2 2.9 x 4.4m
- 5. Utility 0.8 x 1.6m
- 6. Balcony 4.9 x 16.1m

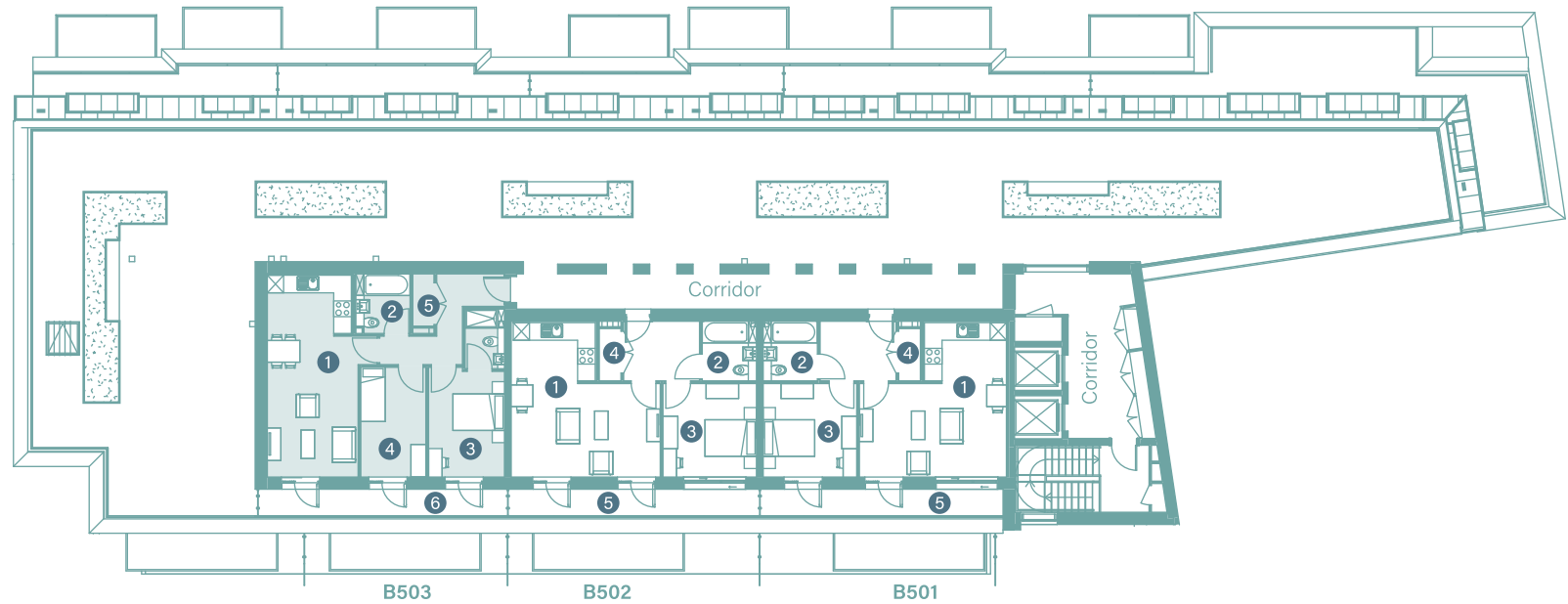


Soave

# Fifth floor

[3] one and two bedroom apartments

- One bedroom
- Two bedrooms



## Apartment B501

52.94 sqm plus 9.00 balcony

- 1. Kitchen/Living Room 5.4 x 5.8m
- 2. Bathroom 2.0 x 2.2m
- 3. Bedroom 3.5 x 3.5m
- 4. Utility 0.8 x 2.2m
- 5. Balcony 1.0 x 9.0m

## Apartment B502

52.94 sqm plus 9.30 balcony

- 1. Kitchen/Living Room 5.4 x 5.8m
- 2. Bathroom 2.0 x 2.2m
- 3. Bedroom 3.5 x 3.5m
- 4. Utility 0.8 x 2.2m
- 5. Balcony 1.0 x 9.3m

## Apartment B503

65.62 sqm plus 9.20 balcony

- 1. Kitchen/Living Room 3.4 x 7.5m
- 2. Bathroom 2.0 x 2.2m
- 3. Master Bedroom 2.8 x 4.1m
- 4. Bedroom 2 2.4 x 4.1m
- 5. Utility 0.8x2.2m
- 6. Balcony 1.0 x 9.2m