

# LA CHASSE



**7**

BEDROOMS

**5**

BATHROOMS

**8,505**

SQ FT

**1.9**

ACRES

**£4,750,000 ST. MARTIN**

Tucked away in a coveted St. Martin location, this enchanting Jersey house is steeped in history—dating back to 1625 and celebrated in Joan Stevens’ Old Jersey Houses. Exuding captivating charm and impeccably restored, La Chasse has been finished to the highest standards—seamlessly marrying timeless elegance with contemporary amenities. Spanning an impressive 8,505 sq. ft., the main residence boasts four generously sized bedrooms, each adorned with en-suite facilities and bespoke fitted wardrobes. Expansive reception rooms, a west-facing conservatory, and a luxurious family kitchen/breakfast area offer spaces perfect for both relaxation and entertaining. Enhancing the appeal for those seeking guest/staff accommodation or a separate home office space is a gorgeous, connected one-bedroom cottage, while a spacious, semi-detached two-bedroom cottage adds further versatility.

Surrounded by a verdant, level garden and orchard, this property features garaging for over five cars and ample...



**LIVINGROOM**  
The Channel Island Estate Agent







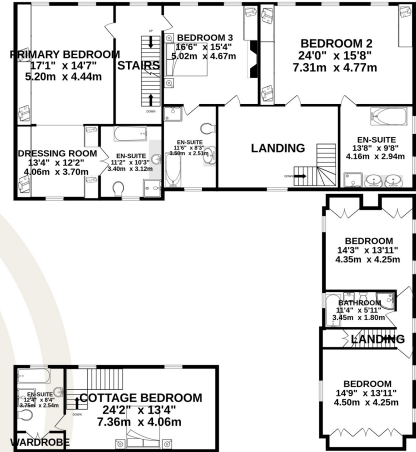
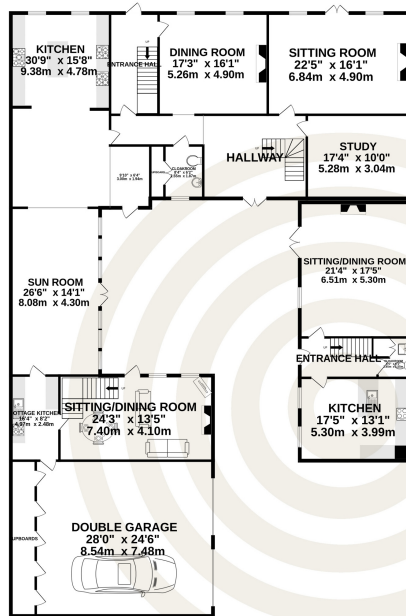
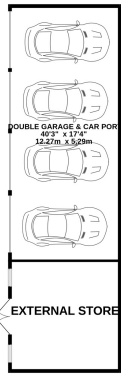




GARAGE  
1000 sq.ft. (93.0 sq.m.) approx.

GROUND FLOOR  
4123 sq.ft. (384.4 sq.m.) approx.

1ST FLOOR  
2865 sq.ft. (266.2 sq.m.) approx.



2ND FLOOR  
501 sq.ft. (465.0 sq.m.) approx.



TOTAL FLOOR AREA : 8505 sq.ft. (790.1 sq.m.) approx.

Whilst every attempt has been made to ensure the accuracy of the floorplan contained here, measurements of doors, windows, rooms and any other items are approximate and no responsibility is taken for any error, omission or mis-statement. This plan is for illustrative purposes only and should be used as such by any prospective purchaser. The services, systems and appliances shown have not been tested and no guarantee as to their operability or efficiency can be given.

Made with Metropix ©2024

**GARAGING**

<b>Double Garage and Car Port</b>	17'4 x 40'3
<b>External Store</b>	17'4 x 17'5

**GROUND FLOOR MAIN HOUSE**

<b>Entrance Hall</b>	7'8 x 16'1
<b>Dining Room</b>	17'3 x 16'1
<b>Sitting Room</b>	22'5 x 16'1
<b>Study</b>	17'4 x 10'0
<b>Hallway</b>	16'0 x 13'3
<b>Cloakroom</b>	6'2 x 8'4
<b>Kitchen</b>	15'8 x 30'9
<b>Sun Room</b>	

**GROUND FLOOR 1 BED COTTAGE**

<b>Cottage Kitchen</b>	8'2 x 16'4
<b>Sitting/Dining Room</b>	24'3 x 13'5
<b>Double Garage</b>	28'0 x 24'6

**FIRST FLOOR MAIN HOUSE**

<b>Stairs</b>	7'7 x 19'2
<b>Primary Bedroom</b>	14'7 x 17'1
<b>Dressing Room</b>	13'4 x 12'2
<b>En-suite</b>	10'3 x 11'2
<b>Bedroom 3</b>	15'4 x 16'6
<b>En-suite</b>	8'3 x 11'6
<b>Landing</b>	19'3 x 13'3
<b>Bedroom 2</b>	24'0 x 15'8
<b>En-suite</b>	9'8 x 13'8

**FIRST FLOOR 1 BED COTTAGE**

<b>Cottage Bedroom</b>	24'2 x 13'4
<b>En-suite</b>	8'4 x 12'4

**SECOND FLOOR MAIN HOUSE**

<b>Landing</b>	7'9 x 9'11
<b>Bedroom 4</b>	15'3 x 13'1
<b>En-suite</b>	15'5 x 13'2

**GROUND FLOOR 2 BED COTTAGE**

<b>Entrance Hall</b>	12'4 x 6'5
<b>Cloakroom</b>	5'1 x 6'5

**GROUND FLOOR 2 BED COTTAGE**

<b>Sitting/Dining Room</b>	17'5 x 21'4
<b>Kitchen</b>	17'5 x 13'1

**FIRST FLOOR 2 BED COTTAGE**

<b>Landing</b>	11'6 x 8'2
<b>Bedroom</b>	14'3 x 13'11
<b>Bathroom</b>	11'4 x 5'11
<b>Bedroom</b>	14'9 x 13'11

**KEY FACTS**

- Semi-detached large executive home
- Main house provides 4 bedrooms
- Complete with 1 bed cottage and 2 bedroom cottage
- Garaging for 6 vehicles and ample parking
- Private gated entrance
- Gardens and orchard
- Available immediately

**SERVICES**

- Mains drains and water

**HEATING**

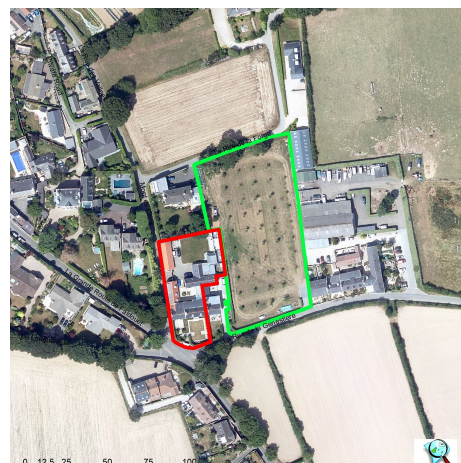
- Electric heating throughout (radiators)

**INCLUSIONS**

- As per inventory

These particulars are supplied on the understanding all negotiations by Livingroom are conducted through this office. We understand these particulars to be correct but we do not guarantee their accuracy nor do they form part of any contract. Any floor plans provided are for the purposes of identification only and are not of absolute delineation. Measurements and areas illustrated are approximate and should not be relied upon. Livingroom have not undertaken a detailed survey, nor tested the services, appliances and specific fittings.

**£4,750,000**



**LIVINGROOM**  
The Channel Island Estate Agent