

VESCO COURT APT.2

SOLE AGENT



1

BEDROOM

1

BATHROOM

369

SQ FT

5.5%

YIELD

£305,000 ST. HELIER

Livingroom is delighted to offer this ground-floor, one-bedroom apartment conveniently located in St. Helier with all amenities close to hand. The perfect property for a someone looking to get onto the property ladder. The apartment is in walk-in condition comprising a separate fully equipped kitchen/dining area, flowing onto a bright and airy lounge, a house bathroom and a double bedroom with built-in wardrobes. Externally the property offers one designated parking space. For more information or to arrange a viewing please call us on 01534 717100 or alternatively, email jersey@livingroomproperty.com to avoid disappointment.



LIVINGROOM

The Channel Island Estate Agent



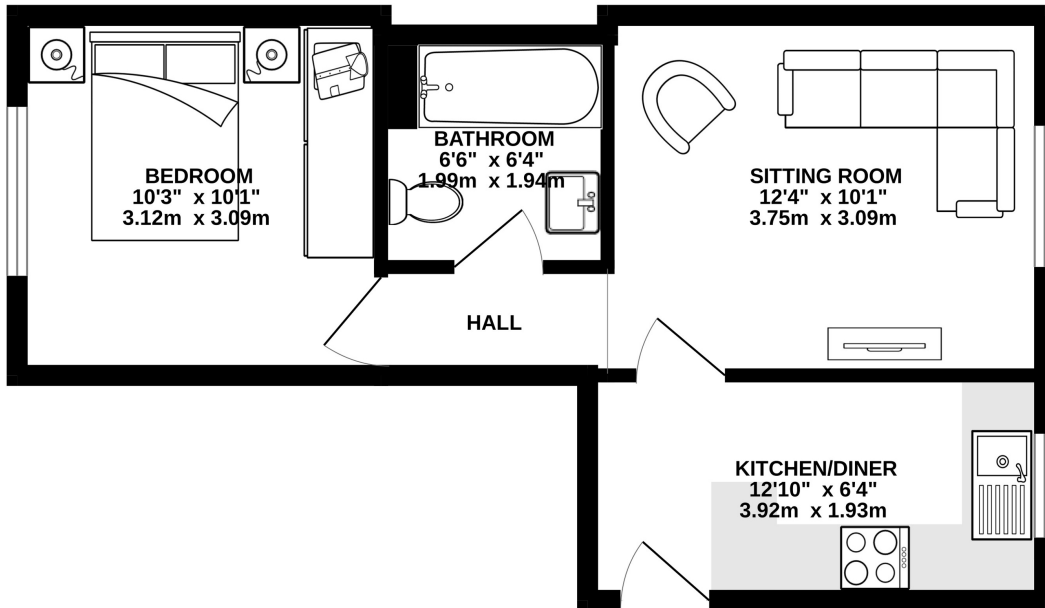








GROUND FLOOR
369 sq.ft. (34.2 sq.m.) approx.



TOTAL FLOOR AREA : 369 sq.ft. (34.2 sq.m.) approx.

Whilst every attempt has been made to ensure the accuracy of the floorplan contained here, measurements of doors, windows, rooms and any other items are approximate and no responsibility is taken for any error, omission or mis-statement. This plan is for illustrative purposes only and should be used as such by any prospective purchaser. The services, systems and appliances shown have not been tested and no guarantee as to their operability or efficiency can be given.
Made with Metropix ©2023

GROUND FLOOR

Kitchen/Diner	12'10 x 6'4
Sitting Room	12'4 x 10'1
Hall	6'4 x 3'1
Bathroom	6'4 x 6'6
Bedroom	10'3 x 10'1

KEY FACTS

Available from the end of July
One bedroom, one bathroom
One designated parking space
Ground floor apartment
Ideal lock up and leave
Recently redecorated
Motivated vendor

SERVICES

Mains water
Mains drains

HEATING

Electric wall mounted heaters throughout

SERVICE CHARGE

£99 pcm

MANAGING AGENT

In house

TENURE

Share Transfer

INCLUSIONS

As per inventory

SCHOOL CATCHMENT

Janvrin
Grainville

These particulars are supplied on the understanding all negotiations by Livingroom are conducted through this office. We understand these particulars to be correct but we do not guarantee their accuracy nor do they form part of any contract. Any floor plans provided are for the purposes of identification only and are not of absolute delineation. Measurements and areas illustrated are approximate and should not be relied upon. Livingroom have not undertaken a detailed survey, nor tested the services, appliances and specific fittings.

£305,000



LIVINGROOM
The Channel Island Estate Agent