

LES CHAPELLE DES FRERES

INVITATIONS TO TENDER • GUIDE PRICE



4

BEDROOMS

1

BATHROOM

6,086

SQ FT

0.2

ACRES

POA ST. JOHN

For sale by Informal Tender on behalf of The National Trust For Jersey, with the end date set for midday on July 13th, 2023, is a potential development site offering opportunities for residential conversion (subject to planning permission). Situated in a picturesque rural location, this property presents an exciting investment prospect. The site comprises two chapel halls, one dating back to 1821 and the other to 1914, showcasing historical significance. In addition, there are outbuildings and a charming granite cottage, providing a range of possibilities for restoration and re-purposing. While the property is in need of major refurbishment throughout, it offers a blank canvas for prospective buyers to transform it according to their vision. Ample parking is available on-site, and there is a garden situated adjacent to the property, further enhancing its potential and versatility. This property is available immediately, making it an enticing opportunity for those seeking a new...



LIVINGROOM

The Channel Island Estate Agent



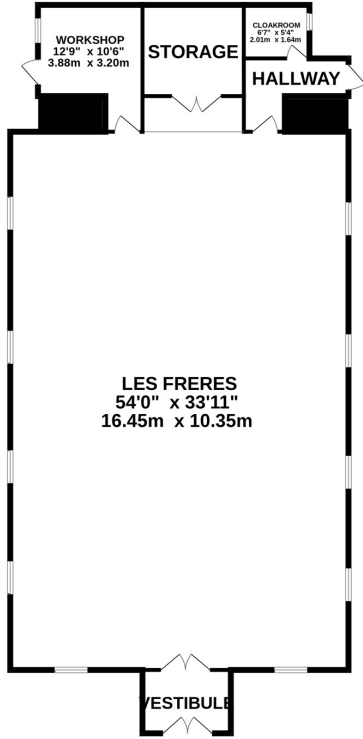




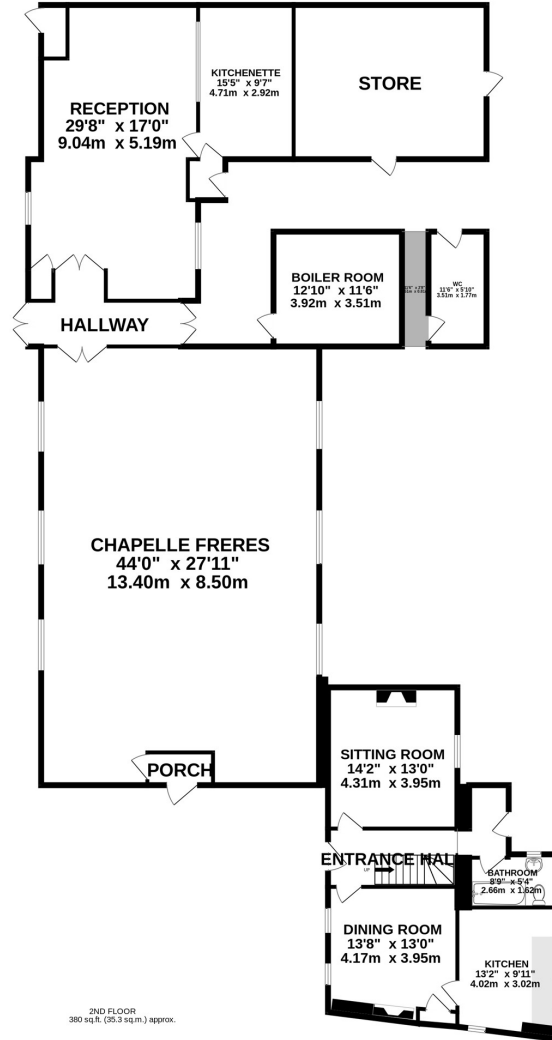




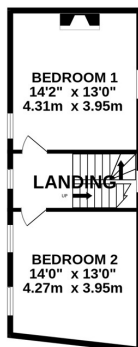
THE CHAPEL
2216 sq.ft. (205.9 sq.m.) approx.



GROUND FLOOR
3064 sq.ft. (284.7 sq.m.) approx.



1ST FLOOR
425 sq.ft. (39.5 sq.m.) approx.



2ND FLOOR
380 sq.ft. (35.3 sq.m.) approx.



TOTAL FLOOR AREA : 6086 sq.ft. (565.4 sq.m.) approx.

Whilst every attempt has been made to ensure the accuracy of the floorplan contained here, measurements of doors, windows, rooms and any other items are approximate and no responsibility is taken for any error, omission or mis-statement. This plan is for illustrative purposes only and should be used as such by any prospective purchaser. The services, systems and appliances shown have not been tested and no guarantee as to their operability or efficiency can be given.

LES FRERES CHAPEL

Vestibule	8'10 x 6'4
Les Freres	33'11 x 54'0
Store	10'2 x 9'2
Workshop	10'6 x 12'9
Hallway	10'6 x 7'4
Cloakroom	6'7 x 5'4

GROUND FLOOR CHAPELLE

Porch	6'7 x 3'3
Chapelle Freres	27'11 x 44'0
Hallway	15'4 x 7'8
Reception	17'0 x 29'8
Kitchenette	9'7 x 15'5
Store	19'4 x 15'5
Boiler Room	12'10 x 11'6
WC	5'10 x 11'6

GROUND FLOOR COTTAGE

Entrance Hall	13'0 x 5'10
Sitting Room	13'0 x 14'2
Dining Room	13'0 x 13'8
Kitchen	9'11 x 13'2
Bathroom	8'9 x 5'4

FIRST FLOOR

Landing	13'0 x 5'10
Bedroom One	13'0 x 14'2
Bedroom Two	13'0 x 14'0

SECOND FLOOR

Landing	12'0 x 11'10
Bedroom Three	12'0 x 14'0
Bedroom Four	12'0 x 12'8

KEY FACTS

INFORMAL TENDER ON BEHALF OF THE NATIONAL TRUST FOR JERSEY
 END DATE: Midday Thursday 13th July 2023
 Potential development residential/commercial to residential (subject to planning)

Two chapel halls dating back to 1821 & 1914

Outbuildings and granite cottage

In need of major refurbishment throughout

Rural location

Parking and field to the rear

Available immediately

IMPORTANT INFORMATION

Grey long-eared bats are roosting in the 1914 Chapel

These are a very protected species

Grade Three Listed: Ref: JN0122

INCLUSIONS

As per inventory

These particulars are supplied on the understanding all negotiations by Livingroom are conducted through this office. We understand these particulars to be correct but we do not guarantee their accuracy nor do they form part of any contract. Any floor plans provided are for the purposes of identification only and are not of absolute delineation. Measurements and areas illustrated are approximate and should not be relied upon. Livingroom have not undertaken a detailed survey, nor tested the services, appliances and specific fittings.

POA



LIVINGROOM
 The Channel Island Estate Agent