

AYLESBURY HOUSE, APT.1

SOLE AGENT



1

BEDROOM

1

BATHROOM

404

SQ FT

0.1

ACRES

POA ST. SAVIOUR

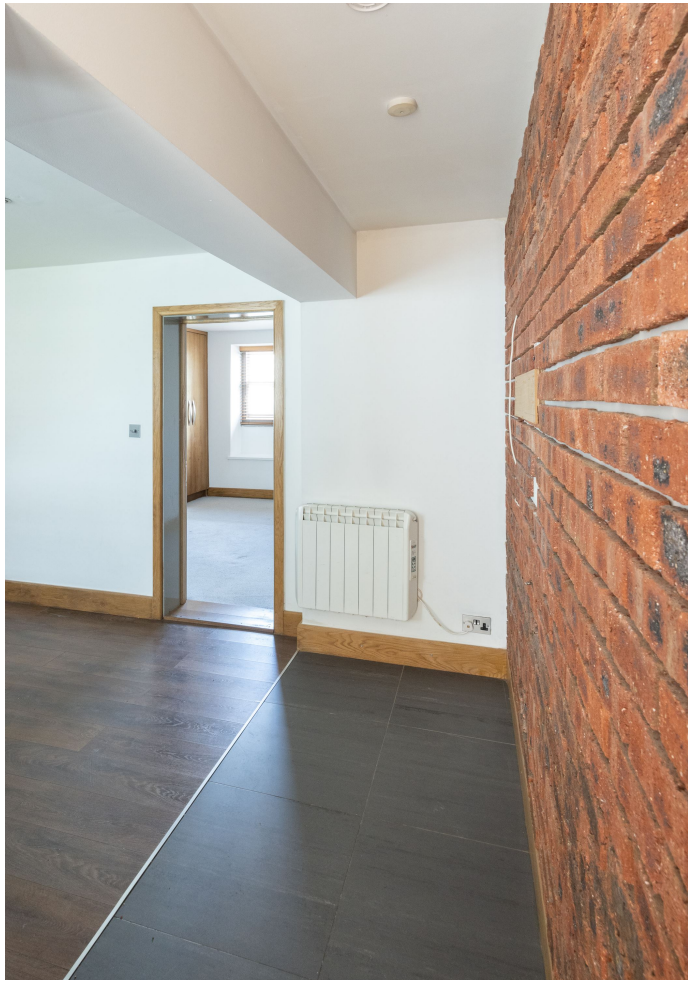
SHARE TRANSFER: Livingroom is delighted to offer this newly refurbished ground floor, garden apartment. Conveniently located in St. Saviour, the property offers a large double bedroom with built-in wardrobes, a house bathroom and a sitting room which flows into the kitchen. Externally, the property offers an easily maintained garden and parking for one vehicle. This walk-in condition apartment is not one to be missed, for more information or to arrange a viewing please call us on 01534 717100 or alternatively, email jersey@livingroomproperty.com to avoid disappointment.



LIVINGROOM

The Channel Island Estate Agent

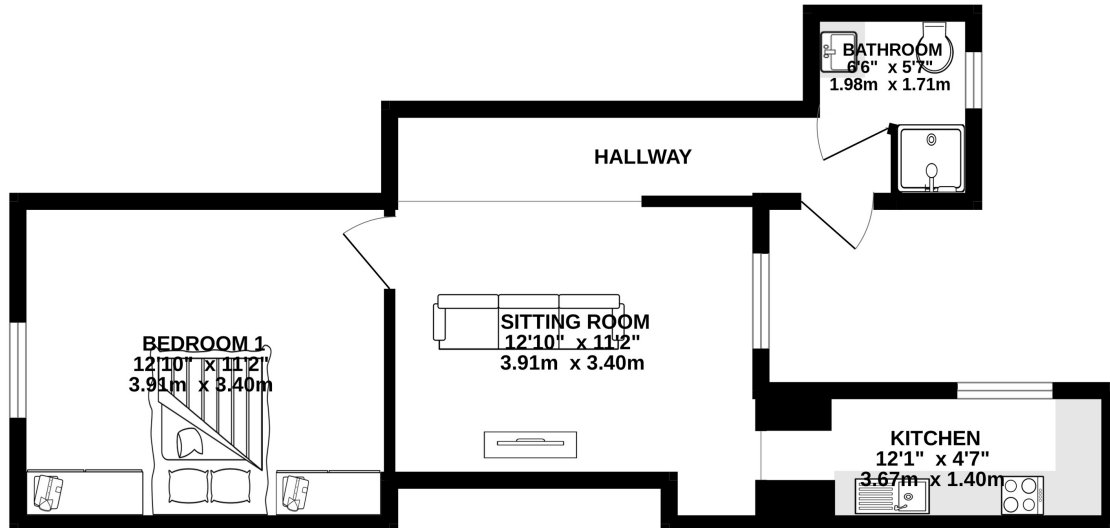








GROUND FLOOR
404 sq.ft. (37.6 sq.m.) approx.



TOTAL FLOOR AREA : 404 sq.ft. (37.6 sq.m.) approx.

Whilst every attempt has been made to ensure the accuracy of the floorplan contained here, measurements of doors, windows, rooms and any other items are approximate and no responsibility is taken for any error, omission or mis-statement. This plan is for illustrative purposes only and should be used as such by any prospective purchaser. The services, systems and appliances shown have not been tested and no guarantee as to their operability or efficiency can be given.
Made with Metropix ©2023

GROUND FLOOR

Bathroom	6'6 x 5'7
Sitting Room	12'10 x 11'2
Bedroom 1	12'10 x 11'2
Kitchen	12'1 x 4'7

KEY FACTS

Ground floor apartment with garden
One bedroom, one bathroom
Ideal lock up and leave
Available immediately
One parking space
Walk in condition

SERVICES

Mains water
Mains drains

HEATING

Electric heating throughout

SERVICE CHARGE

£130 pcm

MANAGING AGENT

Eagle property management

POTENTIAL RENTAL INCOME

£1350 pcm

LISTED

Grade 4 listed

INCLUSIONS

As per inventory

SCHOOL CATCHMENT

St Saviour
Grainville

These particulars are supplied on the understanding all negotiations by Livingroom are conducted through this office. We understand these particulars to be correct but we do not guarantee their accuracy nor do they form part of any contract. Any floor plans provided are for the purposes of identification only and are not of absolute delineation. Measurements and areas illustrated are approximate and should not be relied upon. Livingroom have not undertaken a detailed survey, nor tested the services, appliances and specific fittings.

POA



LIVINGROOM

The Channel Island Estate Agent