

9 LA PLAGES APARTMENTS

SOLE AGENT



2

BEDROOMS

2

BATHROOMS

£2,400 ST. CLEMENT

ENTITLED/LICENSED. Livingroom is delighted to present this luxury apartment situated opposite the beach, with sea views and within walking distance to St. Helier. La Plage offers a fabulous amount of space both internally and externally and comprises a storeroom, and utility, a fully fitted kitchen, a dining/sitting room, a primary bedroom with fitted wardrobes and an En-suite bathroom, and a second bedroom with access to the balcony. Externally, there's a large beautiful wrap-around South-facing balcony with panoramic views. In addition, there are two parking spaces, one being garaged. Rent to include monthly service charges. Available May 2025. Regret is not suitable for pets.

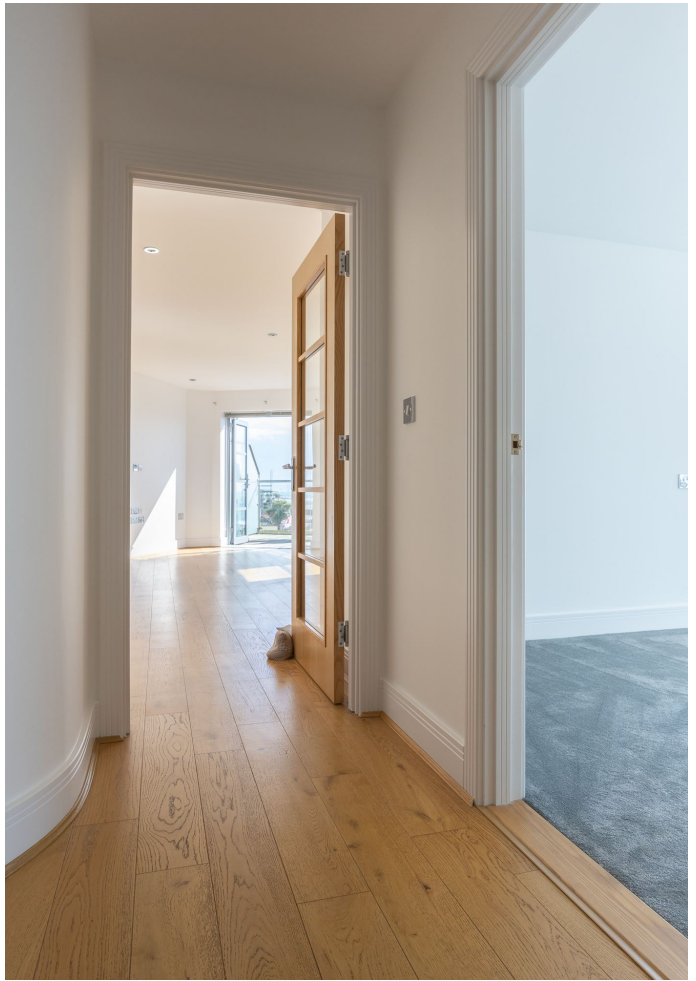


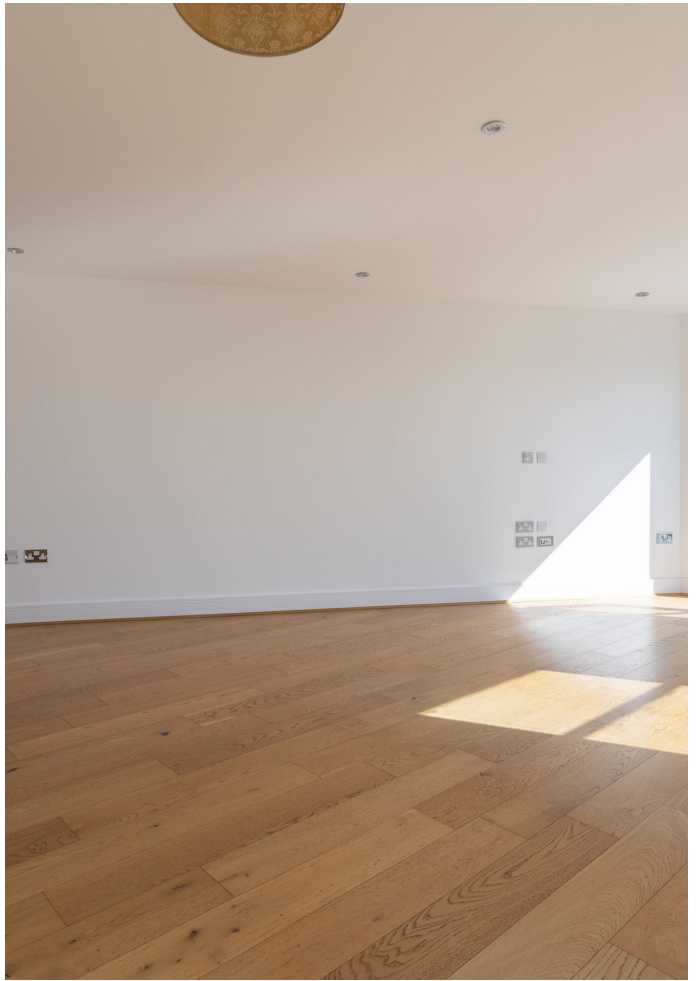
LIVINGROOM

The Channel Island Estate Agent









Hallway	
Utility room	10 x 6'3
Bathroom	7'1 x 6'4
Kitchen	10'11 x 8'
Dining/sitting room	24'7 x 17'10
Primary bedroom	17'7 x 10'8
En-suite bathroom	7'6 x 5'2
Bedroom two	12'8 x 10'8

KEY FACTS

Second floor luxury apartment
Fantastic sea views
Ideally situated for the beach and on a main bus route
Spacious living area
Underfloor electric heating throughout
Large wrap around private balcony
Available May 2025
Parking for two vehicles
QUALIFIED/LICENSED

SERVICES

All mains water and drains

HEATING

Electric underfloor throughout

APPLIANCES

Siemens Oven
Siemens Grill
Siemens microwave
Siemens hob and extractor
Siemens fridge/freezer
Siemens dishwasher
Hotpoint washing machine

INCLUSIONS

To include all items listed in the inventory/condition report

SCHOOL CATCHMENT

Samares
Le Rocquier

These particulars are supplied on the understanding all negotiations by Livingroom are conducted through this office. We understand these particulars to be correct but we do not guarantee their accuracy nor do they form part of any contract. Any floor plans provided are for the purposes of identification only and are not of absolute delineation. Measurements and areas illustrated are approximate and should not be relied upon. Livingroom have not undertaken a detailed survey, nor tested the services, appliances and specific fittings.

£2,400



LIVINGROOM
The Channel Island Estate Agent