

1, PENINSULA



4

BEDROOMS

4

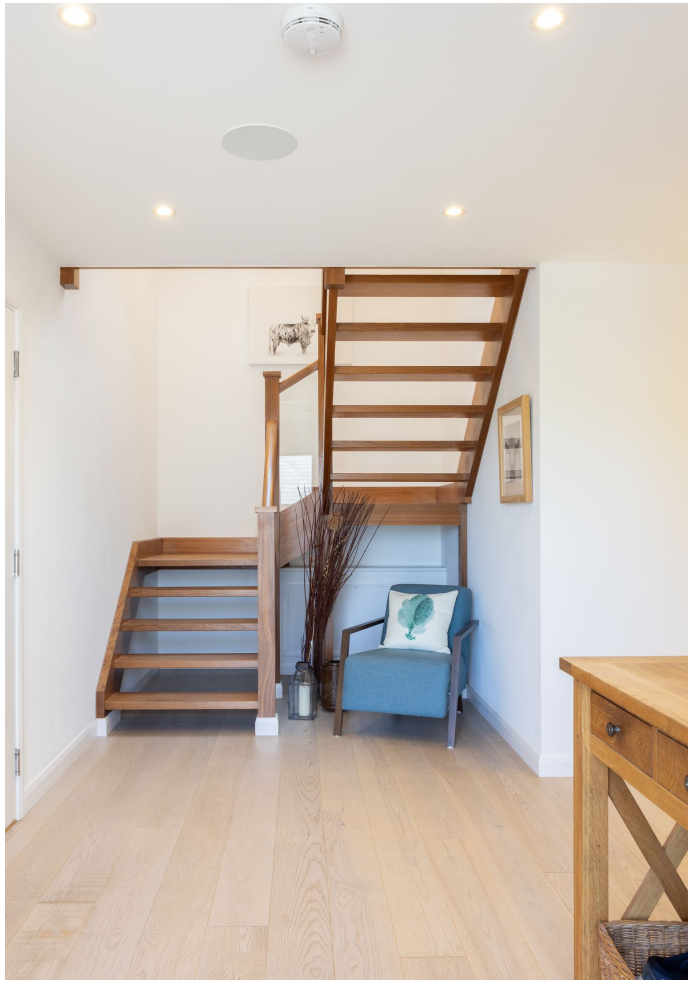
BATHROOMS

£5,000 ST. BRELADE

ENTITLED/LICENSED. Peninsula is a beautiful, gated family home within a short drive from Ouaisne, Portelet and St. Brelade with far-reaching sea views of St. Brelade's bay. The first-floor accommodation provides a large luxury kitchen/dining and sitting room with vaulted ceilings, a house shower room and a separate study which could also be used as a fifth bedroom. On the ground floor, you will find four double bedrooms (two en-suite), a house bathroom and a utility room. Externally, there's a decked/lawned wrap-around garden, a double garage and ample parking. Available fully furnished from mid October 2024 until April 2025. Early viewing is essential not to miss this fantastic property. For more information or to arrange a viewing please call us on 01534 717100 or alternatively, email jersey@livingroomproperty.com to avoid disappointment.



LIVINGROOM
The Channel Island Estate Agent





















Entrance hall	21'3 x 7'3
Utility	12'7 x 6'4
Bedroom four	12'7 x 12'5
Bedroom three	13'8 x 13'3
House bathroom	12'5 x 9'2
Bedroom two	9'10 x 7'8
En-suite	9'10 x 7'8
Primary bedroom	18'0 x 13'7
En-suite	9'10 x 9'2
Kitchen/dining/sitting room	40'6 x 36'1
Study/snug/fifth bedroom	20'5 x 11'10
House shower room	11'10 x 6'8

KEY FACTS

Within a short drive of Ouaisne, Portelet and St. Brelade
Luxury gated family home
Four bedrooms (two en-suite)
Wrap around garden
Double garage plus ample parking
Large open plan living space
Study/snug/fifth bedroom
FULLY FURNISHED
Available for a short term rental from early October until April 2025
QUALIFIED/LICENSED

SERVICES

Mains water and drainage

HEATING

Oil fired underfloor heating

APPLIANCES

Two Siemens double ovens
Siemens Microwave
Siemens full size fridge
Siemens under cabinet freezer
Siemens dishwasher
Siemens induction hob and extractor
CPA wine fridge with additional wine fridge cabinets

INCLUSIONS

To include all items listed in the inventory/condition report

SCHOOL CATCHMENT

Mont Nicolle
Les Quennevais

These particulars are supplied on the understanding all negotiations by Livingroom are conducted through this office. We understand these particulars to be correct but we do not guarantee their accuracy nor do they form part of any contract. Any floor plans provided are for the purposes of identification only and are not of absolute delineation. Measurements and areas illustrated are approximate and should not be relied upon. Livingroom have not undertaken a detailed survey, nor tested the services, appliances and specific fittings.

£5,000



LIVINGROOM
The Channel Island Estate Agent